

LOC I-LFI

109.9

APCH CRS

078°

Rwy Idg

10,002

TDZE

8

Arpt Elev

8

[USAF]

LANGLEY AFB

(KLF1)

RADAR or DME required.

ALSF-1

A1

MISSED APPROACH: Climb to 3000 on LFI

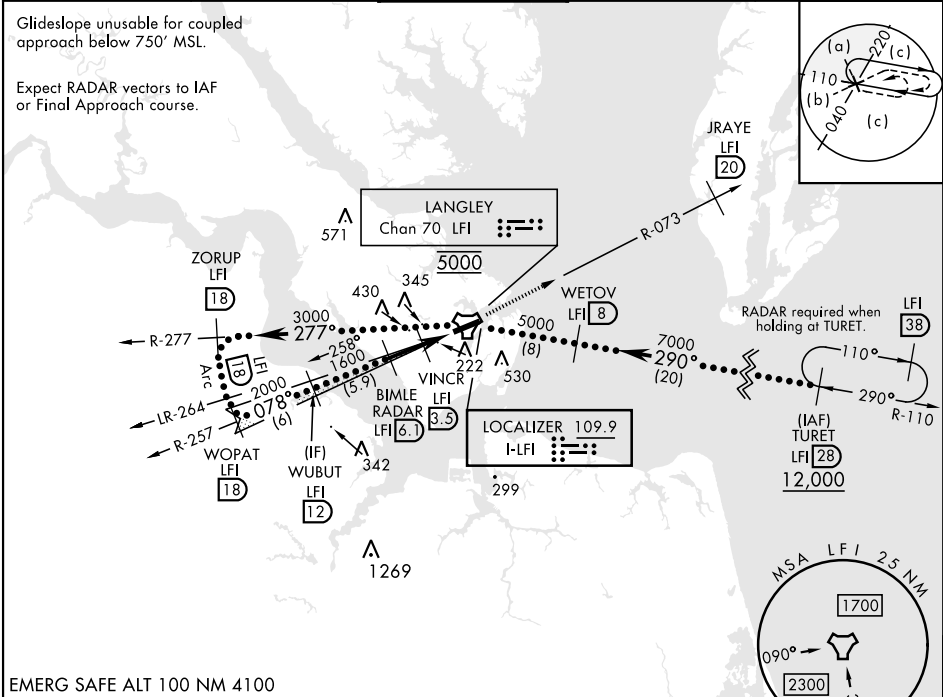
TACAN R-073 to JRAYE/20 DME, then as instructed by ATC.

** When ALS inop, increase RVR to 40 and vis to ¾ mile.

** When ALS inop, increase vis to 1½ miles.

*** Circling S of Rwy 8-26 not authorized.

ATIS ★ 270.1	NORFOLK APP CON 125.7 335.625	TOWER ★ 125.0 253.5	GND CON 121.7 275.8	CLNC DEL 118.85 257.625
-----------------	----------------------------------	------------------------	------------------------	----------------------------



WUBUT LFI 12

2000

GS 2.80° TCH 54

078°

1600

BIMLE RADAR LFI 6.1

VINC R LFI 3.5

LFI 2.3

ZOMPI LFI 1.4

760

2.6 NM

2.1 NM

0.5

JRAYE LFI 20

3000

R-073

ELEV 8

TDZE 8

CATEGORY	C	D	E
S-ILS 8★	208/24	200	(200-½)
S-LOC 8**	480/50	472	(500-1)
CIRCLING ***	700-2 692 (700-2)	740-2¼ 732 (800-2¼)	740-2½ 732 (800-2½)

FAF to MAP 4.7 NM

Knots

120 140 160 180 200

Min:Sec

2:21 2:01 1:46 1:34 1:25