

HI-ILS or LOC Z RWY 26

LOC I-ABM 109.9	APCH CRS 258°	Rwy Idg 10,002 TDZE 8 Arpt Elev 8	[USAF]	LANGLEY AFB (KLF1)
---------------------------	-------------------------	--	--------	--------------------

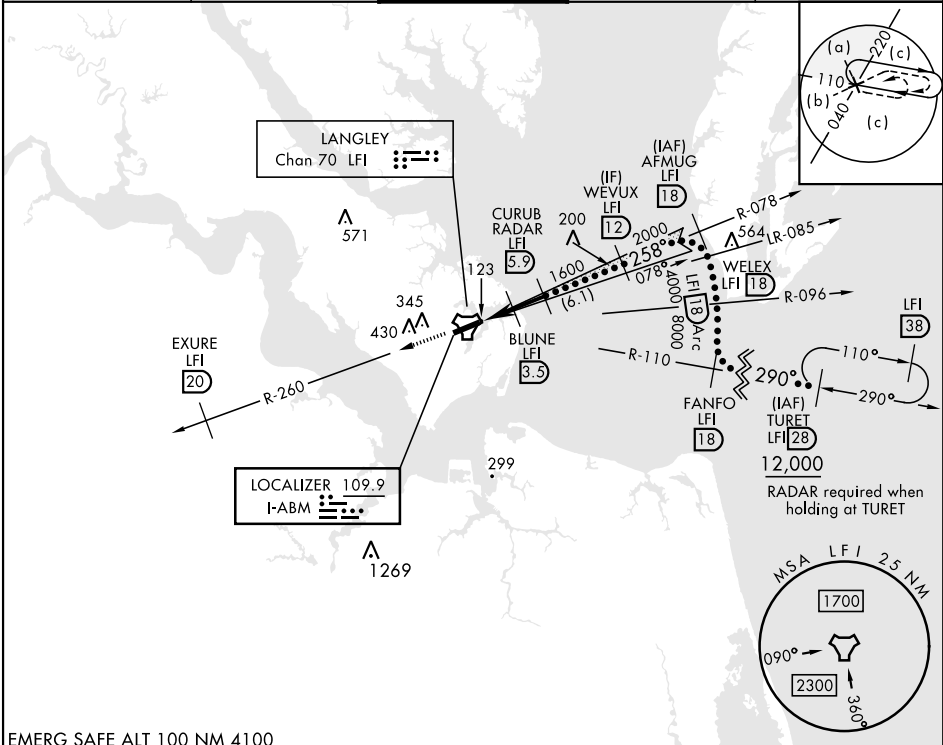
RADAR or DME required.

▲ *When ALS inop, increase RVR to 40, vis to ¾ mile.
**When ALS inop, increase RVR to 55, vis to 1 miles.
***Circling S of Rwy 8-26 not authorized.

ALSF-1
(A1)

MISSED APPROACH: Climb to 3000 on LFI TACAN R-260 to EXURE/20 DME, then as instructed by ATC.

ATIS ★ 270.1	NORFOLK APP CON 125.7 335.625	TOWER ★ 125.0 253.5	GND CON 121.7 275.8	CLNC DEL 118.85 257.625
------------------------	---	-------------------------------	-------------------------------	-----------------------------------



EMERG SAFE ALT 100 NM 4100

3000 LFI R-260

EXURE LFI 20

CURUB RADAR LFI 5.9

BLUNE LFI 3.5

WEVUX LFI 12

ZASPO LFI 1.2

258°

2000

1600

760

GS 2.80° TCH 58

0.5 2.3 NM 2.4 NM

CATEGORY	C	D	E
S-ILS 26*	208/24	200	(200-½)
S-LOC 26**	380/35	372	(400-⅝)
***CIRCLING	700-2 692 (700-2)	740-2 ¼ 732 (800-2 ¼)	740-2 ½ 732 (800-2 ½)

ELEV 8 TDZE 8

HIRL Rwy 8-26

FAF to MAP 4.7 NM

Knots	120	140	160	180	200
Min:Sec	2:21	2:01	1:46	1:34	1:25

HI-ILS or LOC Z RWY 26