

TOLEDO, OHIO

AL-184 (FAA)

25163

WAAS CH <b>48899</b> <b>W25A</b>	APP CRS <b>252°</b>	Rwy Ldg <b>10599</b> TDZE <b>678</b> Apt Elev <b>683</b>
----------------------------------------	------------------------	----------------------------------------------------------------

RNAV (GPS) RWY 25  
EUGENE F KRANZ TOLEDO EXPRESS (TOL)

RNP APCH.

**T** For uncompensated Baro-VNAV systems, LNAV/VNAV NA below -17°C or above 52°C. For inoperative ALS, increase LPV Cat E visibility to RVR 4000, LNAV/VNAV Cat E visibility to 1½ SM, LNAV Cat D/E visibility to RVR 6000.

**A** \*\* RVR 1800 authorized with the use of FD or AP or HUE to DA.

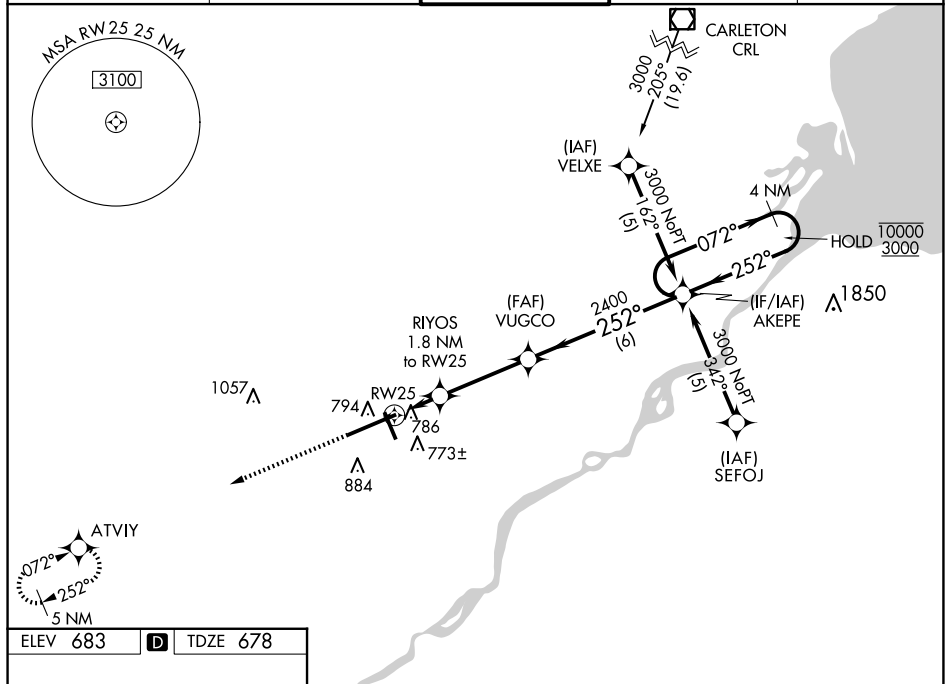
**ASR**

MALSR



**MISSED APPROACH:**  
Climb to 3000 direct  
ATVIY and hold.

ATIS	TOLEDO APP CON	TOLEDO TOWER	GND CON	CLNC DEL
118.75 290,225	134.35 317.55	118.1 285.4	121.9 348.6	121.75 348.6



3000 ATVIY VGS1 and RNAV glidepath not coincident (VGS1 Angle 3.00/TCH 69).

4 NM Holding Pattern

072° 10000  
← 252° 3000

GP 3.00°  
TCH 52

252°

TWR 91 252°

10600 X 150  
-0.3% UP

5599 X 150  
34

RW25

\*1 NM to RW25

\*1280

2400

252°

2400

1 NM 0.8 3.4 NM 6 NM

CATEGORY	A	B	C	D	E
LPV DA**	878/24 200 (200-½)				
LNAV/VNAV DA	1065/50 387 (400-1)				
LNAV MDA	1040/24 362 (400-½)			1040/50 362 (400-1)	
<b>C</b> CIRCLING	1200-1 517 (600-1)		1300-1¾ 617 (700-1¾)	1360-2¼ 677 (700-2¼)	1360-2½ 677 (700-2½)

TDZ/CL Rwy 7  
HIRL Rwy 7-25  
MIRL Rwy 16-34  
REIL Rws 16 and 34

TOLEDO, OHIO

Amdt 2D 05NOV20

EUGENE E KRANZ TOLEDO EXPRESS (TOL)

41°35'N-83°48'W

## RNAV (GPS) RWY 25

EC-2, 10 JUL 2025 to 07 AUG 2025