

HI-TACAN RWY 25

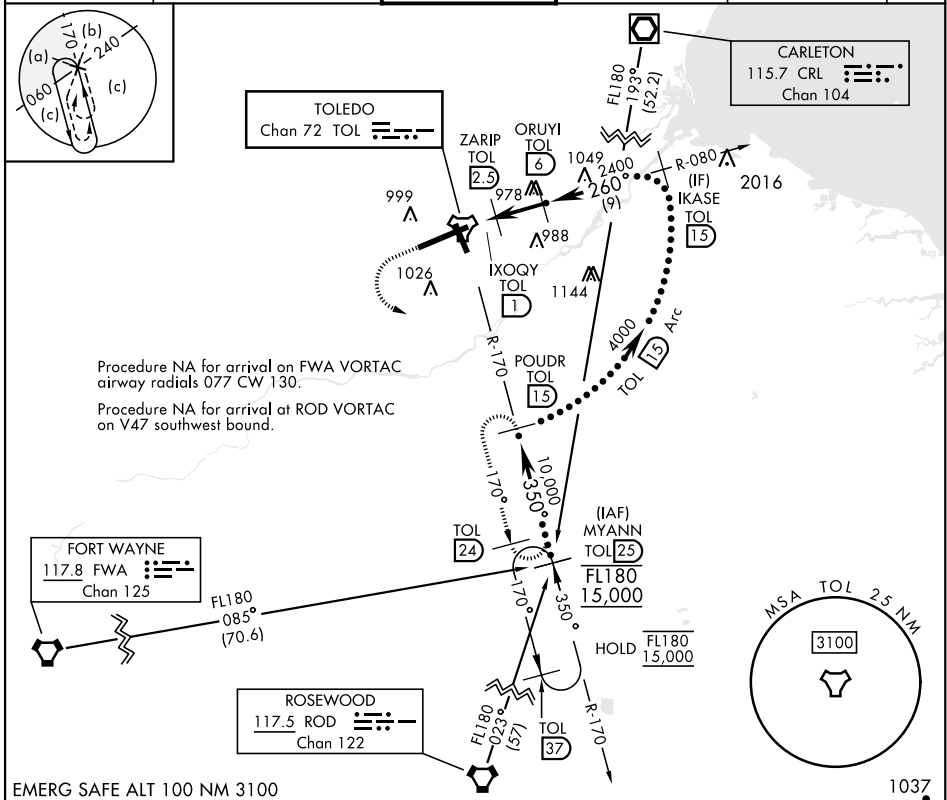
TACAN Chan 72	APCH CRS 260°	Rwy ldg 10,599 TDZE 678 Arpt Elev 684	[USAF]	EUGENE F KRANZ TOLEDO EXPRESS (KTOL)
-------------------------	-------------------------	--	--------	--------------------------------------

▼ * When ALS inop, increase RVR to 60, vis to 1½ mile.

▲ **MALSR**
A5

MISSED APPROACH: Climb to 3000 then left turn on TOL R-170 to POU DR/15 DME and hold.

ATIS 118.75 290.225	TOLEDO APP CON 126.1 317.55	TOLEDO TOWER 118.1 285.4	GND CON 121.9 348.6	CLNC DEL 121.75 348.6	ASR
-------------------------------	---------------------------------------	------------------------------------	-------------------------------	---------------------------------	-----



EMERG SAFE ALT 100 NM 3100

3000
↑
TOL R-170
POU DR TOL 15

VGSI and ILS glidepath not coincident (VGSI Angle 3.00/TCH 69).

IKASE TOL 15

ORUYI TOL 6

ZARIP TOL 2.5

IXOQY TOL 1

TOL TACAN

1240

2400

2.69° TCH 69

0.8 1.5 NM 3.5 NM

CATEGORY	C	D	E
S-25 *	1080/40 402 (500-¾)	1080/40 402 (500-¾)	402 (500-¾)
CIRCLING	1360-2 676 (700-2)	1400-2½ 716 (800-2½)	1400-2½ 716 (800-2½)

ELEV 684 **TDZE 678**

Rwy 7 ldg 10,599'
Rwy 25 ldg 10,599'

788 A

794 A

769 ± A

750 A

778 A

726 ± A

775 ± A

HIRL Rwy 7-25
MIRL Rwy 16-34
REIL Rwy 16, 34
TDZL/CL Rwy 7

HI-TACAN RWY 25

EC-2, 10 JUL 2025 to 07 AUG 2025

EC-2, 10 JUL 2025 to 07 AUG 2025