

TOLEDO, OHIO

HI-ILS Y or LOC Y RWY 25

LOC/DME I-BQE 108.7 Chan 24	APCH CRS 252°	Rwy Idg 10,599 TDZE 678 Arpt Elev 684
---	-------------------------	--

[USAF]

EUGENE F KRANZ TOLEDO EXPRESS (KTOL)

DME required

▼ * When ALS inop, increase vis to 1½ miles.

MALSR

MISSED APPROACH: Climb to 2500 then climbing left turn to 3000 on TOL R-170 to POUDR (TOL R-170/15 DME) and hold.

ATIS
118.75 290.225

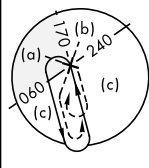
TOLEDO APP CON
126.1 317.55

TOLEDO TOWER
118.1 285.4

GND CON
121.9 348.6

CLNC DEL
121.75 348.6

ASR




1070


Procedure NA for arrival on FWA
VORTAC airway radials 077 CW 134.


Procedure NA for arrival at ROD
VORTAC on V47 southwest bound.

Use I-BQE DME when on the localizer course.

TOLEDO
72 TOI = _ _

LOCALIZER 108.7
I-BQE 
Chn 24

FORT WAYNE
117.8 FWA 
Chan 125

ROSEWOOD
17.5 ROD 
Chan 122

EMERG SAFE ALT 100 NM 3100

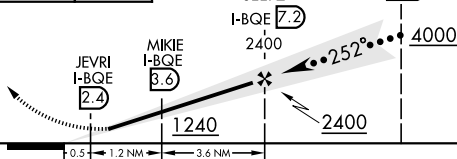
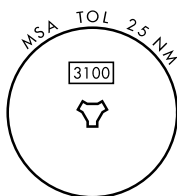
2500 ↑	3000 TOL R-170 ↘	POUDR TOL 15
-----------	---------------------------	--------------------

VGSI and ILS glidepath
not coincident
(VGSI Angle 3.00/TCH 69) OTBUE
TOL 15

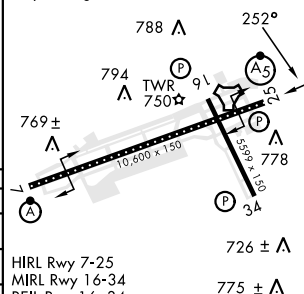
OTBUE	
COL	15
QE	16.8

ELEV	684	D	TDZE	678
------	-----	----------	------	-----

Rwy 7 ldg 10,599'
Rwy 25 ldg 10,599'



CATEGORY	C	D	E
S-ILS 25	945/20	267	(300-½)
S-LOC 25 *	1200/55	522	(600-1)
C CIRCLING	1300-1½ 616 (700-1¾)	1360-2¼ 676 (700-2½)	1360-2½ 676 (700-2½)



TOLEDO, OHIO

41° 35'N-83° 48'W EUGENE F KRANZ TOLEDO EXPRESS (KTOL)

Amdt 6C 23JAN25

HI-ILS Y or LOC Y RWY 25