

WAAS CH <b>78239</b> <b>W09A</b>	APP CRS <b>092°</b>	Rwy Idg TDZE Apt Elev	<b>5001</b> <b>631</b> <b>631</b>
--	------------------------	-----------------------------	---

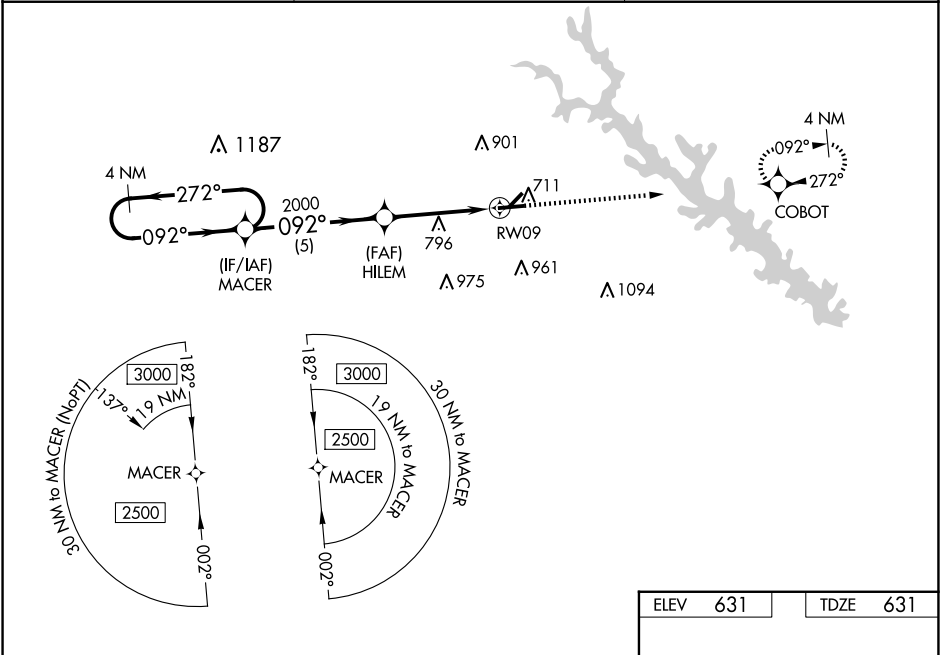
RNAV (GPS) RWY 9

GREENWOOD COUNTY (GRD)

For uncompensated Baro-VNAV systems, LNAV/VNAV NA below -10°C (14°F) or above 54°C (130°F). Baro-VNAV and VDP NA when using Laurens altimeter setting. DME/DME RNP-0.3 NA. Circling Rwy 5, 23 NA at night. When local altimeter setting not received, use Laurens altimeter setting and increase LPV DA to 991 feet and visibility 1/8 SM all Cats, LNAV/VNAV DA to 1070 feet and visibility 1/4 SM all Cats, increase all MDA 60 feet, and LNAV Cat C/D visibility 1/8 SM and Circling Cat C/D visibility 1/4 SM. Rwy 9 helicopter visibility reduction below 3/4 SM NA.

MISSED APPROACH:  
Climb to 2500 direct COBOT and hold.

ASOS <b>121.125</b>	GREER APP CON★ <b>120.6 350.2</b>	UNICOM <b>122.975 (CTAF) 0</b>
------------------------	--------------------------------------	-----------------------------------



4 NM Holding Pattern		MACER		HILEM		2500 ↑ 2500		COBOT ✦	
2500 ← 272° 092° →		092°		2000		*LNAV only.			
GP 3.00° TCH 55		2000		1.2 NM to RW09		RW09			
		5 NM		3 NM		1.2 NM			
CATEGORY	A	B	C	D					
LPV DA	938-1 307 (400-1)								
LNAV/ VNAV DA	1017-1¼ 386 (400-1¼)								
LNAV MDA	1060-1 429 (500-1)				1060-1¼ 429 (500-1¼)				
CIRCLING	1080-1		1100-1		1320-2		1340-2¼		
	449 (500-1)		469 (500-1)		689 (700-2)		709 (800-2¼)		

ELEV 631

TDZE 631

2500

COBOT

\*LNAV only.

1.2 NM to RWY09

092°

3600 X 60

5001 X 100

690

27

MIRL Rwy 9-27 0

REIL Rwy 9 and 27 0