

VORTAC	SQS	APP CRS	Rwy Idg	5011
114.7		076°	TDZE	149
Chan 94			Apt Elev	162

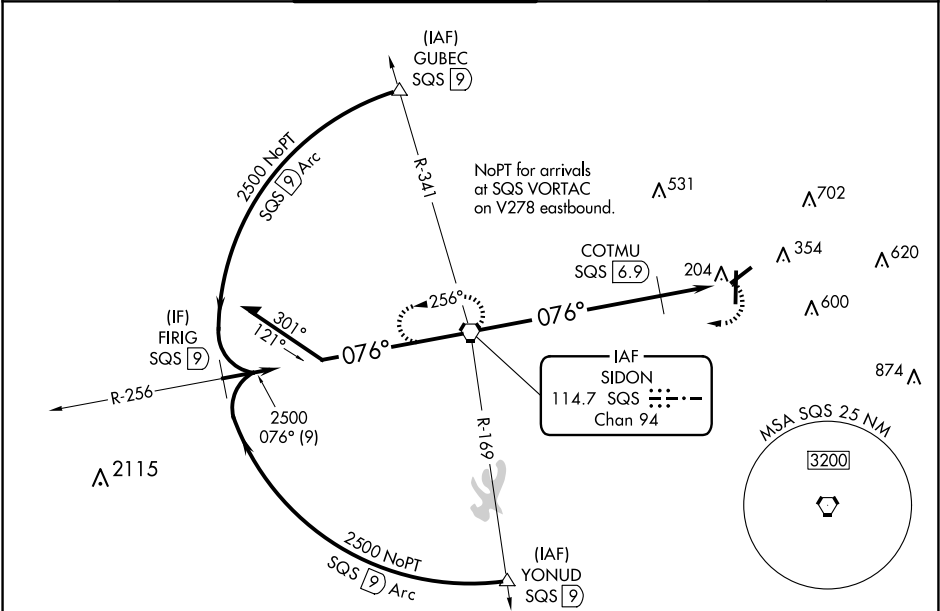
VOR RWY 5

GREENWOOD-LEFLORE (GWO)

When local altimeter setting not received, use Greenville altimeter setting and increase all MDAs 120 feet and visibility S-5 Cat B and Circling Cat A/B ¼ SM, and S-5 Cat C/D and Circling Cat C ½ SM and COTMU Fix Minimums S-5 Cat C/D ¼ SM and Circling Cat C ½ SM. Rwy 5 helicopter visibility reduction below 1 SM NA. Straight-in Rwy 5 NA at night, Circling Rwy 5, 23 NA at night.

MISSED APPROACH:
Climbing right turn to 2500 direct SQS VORTAC and hold.

ASOS	MEMPHIS CENTER	GREENWOOD TOWER ★	GND CON	CLNC DEL	UNICOM
119.975	132.5 259.1	118.35 (CTAF) 0 367.6	125.55 373.4	125.55	122.95



Remain within 10 NM

SQS VORTAC

2500

2600

2500

256°

076°

*1000 when using Greenville altimeter setting.

2500

SQS

COTMU

SQS [6.9]

SQS [9.5]

*880

6.9 NM

2.6 NM

CATEGORY	A	B	C	D
S-5	880-1	731 (800-1)	880-2	731 (800-2)
CIRCLING	880-1	718 (800-1)	1000-2½ 838 (900-2½)	1120-3 958 (1000-3)
COTMU FIX MINIMUMS (DME REQUIRED)				
S-5	600-1	451 (500-1)	600-1¾	451 (500-1¾)
CIRCLING	760-1	598 (600-1)	1000-2½ 838 (900-2½)	1120-3 958 (1000-3)

ELEV 162

TDZE 149

076° 9.5 NM from FAF

0.3% UP

6501 X 150

81

45

5011 X 150

TWR 202

REIL Rws 23 and 36

MIRL Rwy 5-23

HIRL Rwy 18-36

FAF to MAP 9.5 NM

Knots	60	90	120	150	180
Min:Sec	9:30	6:20	4:45	3:48	3:10