
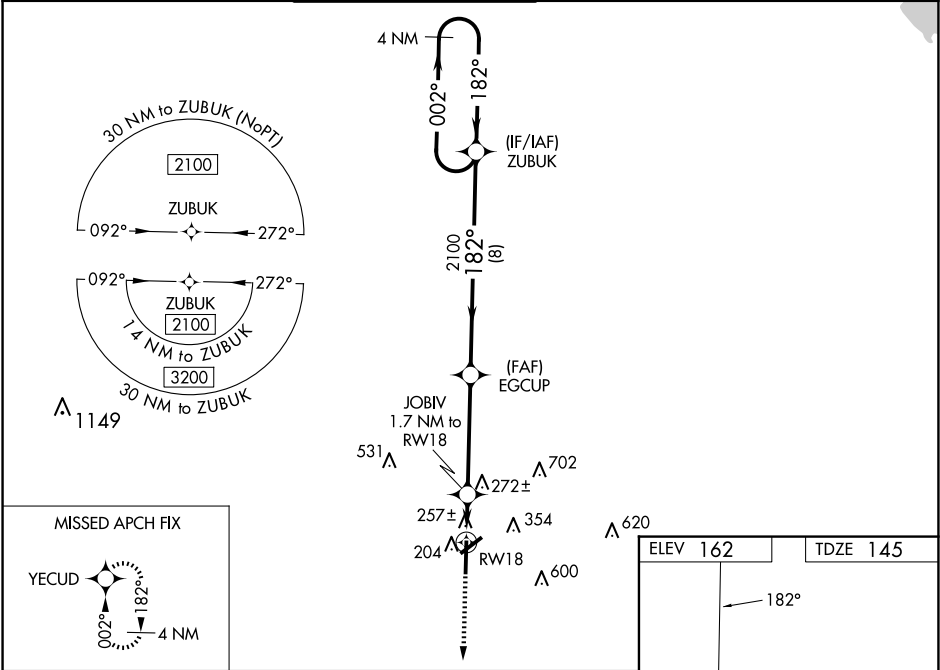
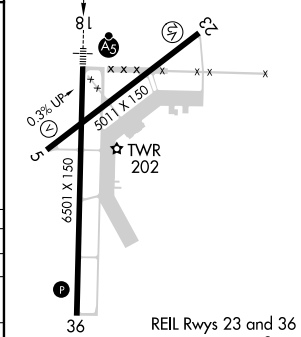


WAAS CH 50199 W18A	APP CRS 182°	Rwy ldg TDZE Apt Elev	6501 145 162
RNAV (GPS) RWY 18 GREENWOOD-LEFLORE (GWO)			

RNP APCH-GPS.				<div>MALSR</div> <div></div>	MISSED APPROACH: Climb to 2100 direct YECUD and hold.
<div><div><div>T</div><div>A</div></div><div>For uncompensated Baro-VNAV systems, LNAV/VNAV NA below -22°C or above 54°C. Baro-VNAV and VDP NA when using Greenville altimeter setting. For inop ALS when using Greenville altimeter setting, increase LPV all Cats visibility to 1½ SM, and LNAV/VNAV all Cats to 1¾ SM, and LNAV Cat A/B to 1 SM, and Cat C/D to 1¾ SM. When local altimeter setting not received, use Greenville altimeter setting: increase LPV DA to 580 feet and visibility ¾ SM, LNAV/VNAV DA to 675 feet and visibility ¾ SM; increase all MDAS 120 feet and visibility LNAV Cat C/D ¼ SM and Circling Cat C ½ SM. For inop ALS, increase LNAV/VNAV all Cats visibility to 1¾ SM, and LNAV all Cats to 1 SM. Rwy 18 helicopter visibility reduction below ¾ SM NA. Circling Rwy 5, 23 NA at night.</div></div>					
ASOS 119.975	MEMPHIS CENTER 132.5 259.1	GREENWOOD TOWER ★ 118.35 (CTAF) 0 367.6	GND CON 125.55 373.4	CLNC DEL 125.55	UNICOM 122.95



2100	YECUD	JOBIV 1.7 NM to RW18	EGCUP 2100	ZUBUK	4 NM Holding Pattern	2100
1 NM	0.7 NM	4.3 NM	8 NM			
CATEGORY	A	B	C	D		
LPV DA	471-¾		326 (400-¾)			
LNAV/VNAV DA	566-1		421 (500-1)			
LNAV MDA	520-¾		375 (400-¾)			
CIRCLING	760-1 598 (700-1)		1000-2½ 838 (900-2½)		1120-3 958 (1000-3)	



REIL Rws 23 and 36
MIRL Rwy 5-23
HIRL Rwy 18-36