

WAAS CH 87037 W28A	APP CRS 276°	Rwy Idg TDZE 1013 Apt Elev 1048
----------------------------------------	------------------------	-----------------------------------------------------

RNAV (GPS) RWY 28

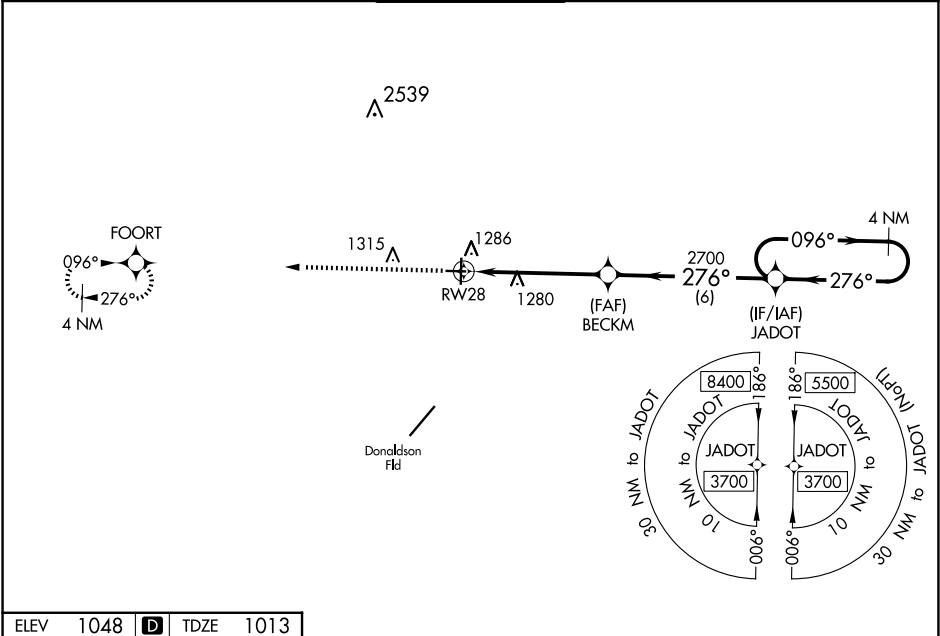
GREENVILLE DOWNTOWN (GMU)

▼ Baro-VNAV NA when using Greer altimeter setting. For uncompensated Baro-VNAV systems, LNAV/VNAV NA below -6°C (22°F) or above 54°C (130°F). DME/DME RNP-0.3 NA.

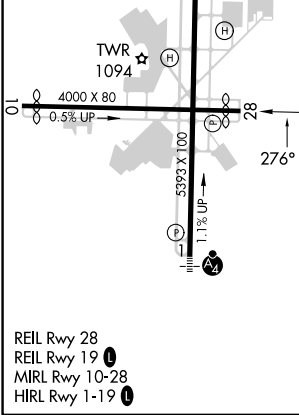
▲ When local altimeter setting not received, use Greer altimeter setting and increase all DA 29 feet and all MDA 40 feet; increase LNAV/VNAV all Cats and LNAV Cats C/D visibility ½ mile. Helicopter visibility reduction below 1 SM NA. Night landing: Rwy 19 NA.

MISSED APPROACH:
Climb to 3700 direct FOORT and hold.

ATIS 127.075	GREER APP CON ★ 118.8 270.275	GREENVILLE TOWER ★ 119.9 (CTAF) 0 257.7	GND CON 121.25	UNICOM 122.95
------------------------	-----------------------------------------	---------------------------------------------------	--------------------------	-------------------------



ELEV 1048	D	TDZE 1013
------------------	----------	------------------



3700

FOORT

↑

✦

4 NM Holding Pattern

JADOT

096° →

← 276°

3700

BECKM

2700

276°


2700

RW28

5.2 NM

6 NM

GP 3.00° TCH 40

CATEGORY	A	B	C	D
LPV DA	1263-1 250 (300-1)			
LNAV/VNAV DA	1463-1½ 450 (500-1½)			
LNAV MDA	1540-1	527 (500-1)	1540-1½	527 (500-1½)
 CIRCLING	1620-1	572 (600-1)	1780-2 732 (800-2)	1860-2¾ 812 (900-2¾)

SE-2, 10 JUL 2025 to 07 AUG 2025

SE-2, 10 JUL 2025 to 07 AUG 2025