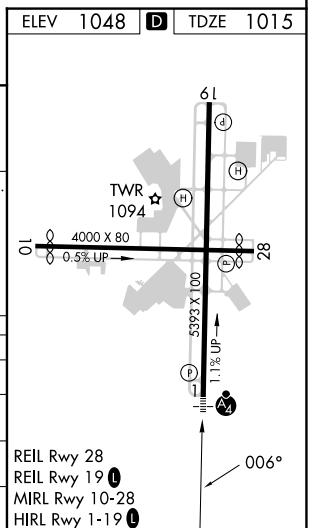


# RNAV (GPS) RWY 1

## GREENVILLE DOWNTOWN (GMU)

MALSF

**MISSED APPROACH:**  
Climb to 3400 direct  
GEBLL and via track  
060° to PELAM and  
hold.



4 NM Holding Pattern

RIGYY

3000 ← 186°

006° →

006°

2400

GP 3.00° TCH 36

FARUL

\*1.3 NM to RW01

RW01

6 NM

3 NM

1.3 NM

1.3 NM

3400

GEBLL

PELAM

tr 060°

\*LNAV only

CATEGORY	A	B	C	D
LPV DA	1215- $\frac{3}{4}$	200 (200- $\frac{3}{4}$ )		
LNAV/VNAV DA	1415-1 $\frac{1}{2}$	400 (400-1 $\frac{1}{2}$ )		
LNAV MDA	1440- $\frac{3}{4}$	425 (400- $\frac{3}{4}$ )	1440-1 $\frac{1}{4}$	425 (400-1 $\frac{1}{4}$ )
CIRCLING	1620-1	572 (600-1)	1780-2 732 (800-2)	1860-2 $\frac{3}{4}$ 812 (900-2 $\frac{3}{4}$ )

SE-2, 10 JUL 2025 to 07 AUG 2025

SE-2. 10 JUL 2025 to 07 AUG 2025