

LOC I-GMU
109.7

APP CRS
006°

Rwy Idg **5393**
TDZE **1015**
Apt Elev **1048**

ILS or LOC RWY 1
GREENVILLE DOWNTOWN (GMU)

ADF required. RADAR required for procedure entry at SPKRI.

▼

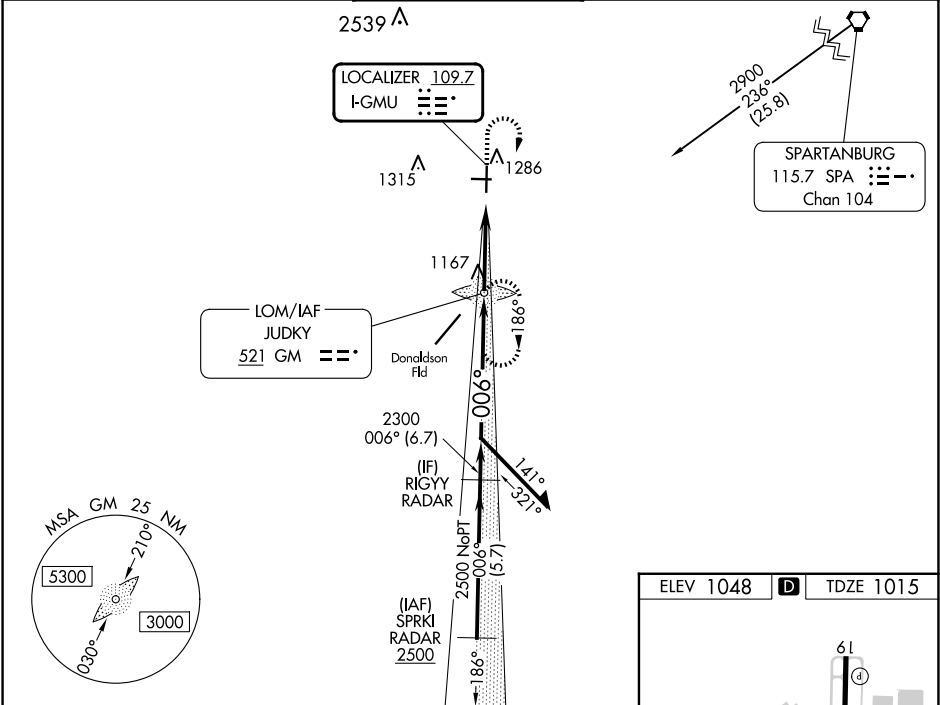
▲

Inop table does not apply to S-ILS 1 all Cats. For inop ALS, increase S-LOC 1 visibility Cats C/D to 1½ SM. When local altimeter setting not received, use Greer altimeter setting and increase DA to 1248, increase all MDAs 40 feet and Circling Cat C visibility ¼ SM. For inop ALS when using Greer altimeter setting, increase S-LOC 1 visibility Cat C/D to 1½ SM. When using Greer altimeter setting, inop table does not apply to S-ILS 1 all Cats.

MALSF

MISSED APPROACH: Climb to 1500 then climbing right turn to 2900 direct JUDKY LOM and hold, continue climb-in-hold to 2900.

ATIS 127.075	GREER APP CON★ 118.8 270.275	GREENVILLE TOWER★ 119.9 (CTAF) 0 257.7	GND CON 121.25	UNICOM 122.95
------------------------	--	--	--------------------------	-------------------------



Remain within 10 NM

GM LOM JUDKY

2900

186°

2175

006°

2400

2300

GS 3.00° TCH 35

GS unusable below 1216.

3.6 NM

1500

2900

JUDKY

CATEGORY	A	B	C	D
S-ILS 1	1216-3⁄4 201 (200-3⁄4)			
S-LOC 1	1420-3⁄4	405 (400-3⁄4)	1420-1	405 (400-1)
CIRCLING	1620-1	572 (600-1)	1780-2 732 (800-2)	1860-2³⁄4 812 (900-2³⁄4)

ELEV 1048

D

TDZE 1015

TWR 1094

61

28

4000 X 80

0.5% UP

5393 X 100

1.1% UP

006°

REIL Rwy 28

REIL Rwy 19

MIRL Rwy 10-28

HIRL Rwy 1-19

FAF to MAP 3.6 NM

Knots	60	90	120	150	180
Min:Seq	3:36	2:24	1:48	1:26	1:12