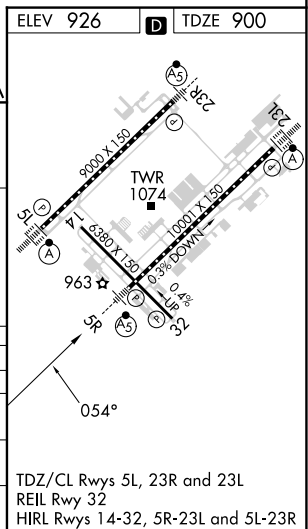


RNAV (GPS) RWY 5R
PIEDMONT TRIAD INTL (GSO)

T For uncompensated Baro-VNAV systems, LNAV/VNAV NA below -16°C or above 54°C.
A Simultaneous approach authorized. Use of FD or AP required during simultaneous operations. LNAV procedure NA during simultaneous operations. For inop ALS, increase LNAV Cat C/D visibility to RVR 6000.
 ** 1800 RVR authorized with use of FD or AP or HUD to DA.

MISSED APPROACH:
Climb to 3200 direct
JELEB and hold.



SE-2. 10 JUL 2025 to 07 AUG 2025