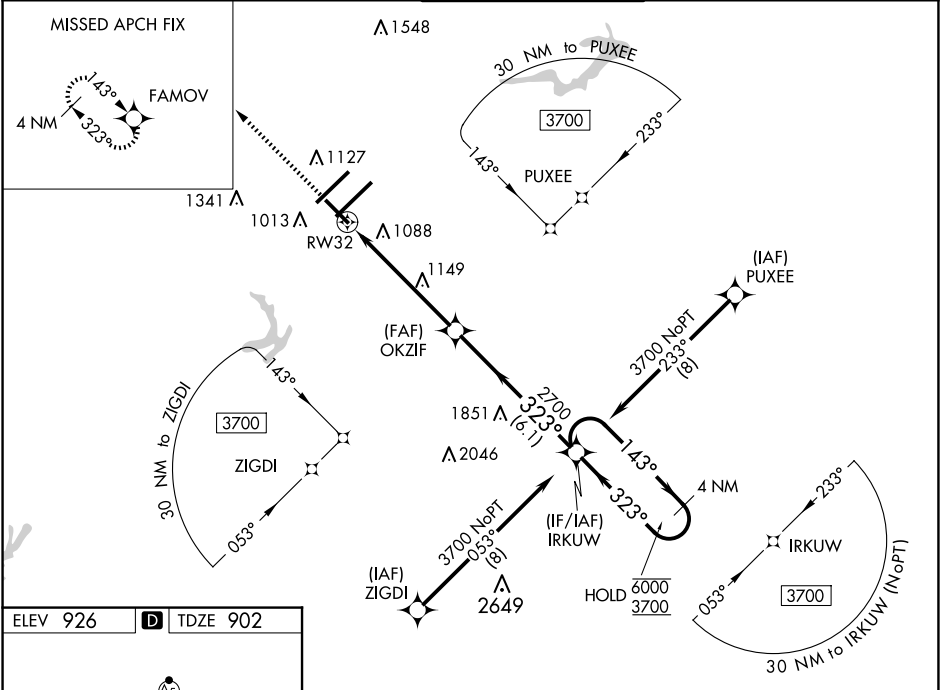


WAAS CH 61035 W32A	APP CRS 323°	Rwy Idg 6380 TDZE 902 Apt Elev 926
--	------------------------	---

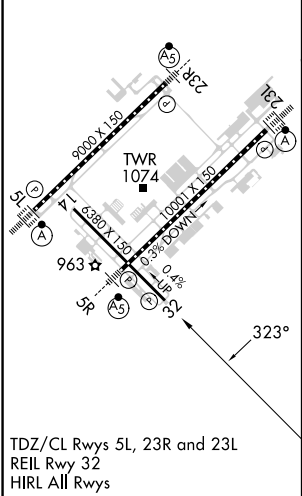
RNAV (GPS) RWY 32
PIEDMONT TRIAD INTL (GSO)

RNP APCH - GPS.		MISSED APPROACH: Climb to 4100 direct FAMOV and hold, continue climb-in-hold to 4100.	
⚠ For uncompensated Baro-VNAV systems, LNAV/VNAV NA below -7°C or above 54°C. Rwy 32 helicopter visibility reduction below ¾ SM NA.			

D-ATIS 128.55	GREENSBORO APP CON 124.35 269.225 126.6 327.075 (250°-049°) (050°-249°)	GREENSBORO TOWER 119.1 290.325	GND CON 121.9 348.6	CLNC DEL 121.75
-------------------------	---	--	-------------------------------	---------------------------



ELEV 926	D	TDZE 902
----------	----------	----------



4100 FAMOV		4 NM Holding Pattern		
		IRKUW		
		OKZIF		
1.4 NM to RW32		2700		
RW32		2700		
1.4 NM		4.1 NM		
6.1 NM		GP 3.00°		
TCH 52				
CATEGORY	A	B	C	D
LPV DA	1102-¾		200 (200-¾)	
LNAV/VNAV DA	1419-1⅓		517 (500-1⅓)	
LNAV MDA	1400-1	498 (500-1)	1400-1⅓	498 (500-1⅓)
CIRCLING	1440-1	514 (600-1)	1700-2¼ 774 (800-2¼)	1700-2½ 774 (800-2½)

SE-2, 10 JUL 2025 to 07 AUG 2025

SE-2, 10 JUL 2025 to 07 AUG 2025