

WAAS CH 97710 W23A	APP CRS 234°	Rwy Idg 9601 TDZE 889 Apt Elev 926
--	------------------------	---

RNAV (GPS) RWY 23L
PIEDMONT TRIAD INTL (GSO)

RNP APCH - GPS.

T	Simultaneous approach authorized. LNAV procedure NA during simultaneous operations.
A	Use of FD or AP required during simultaneous operations. For uncompensated Baro-VNAV systems, LNAV/VNAV NA below -16°C or above 54°C.

ALSF-2



MISSED APPROACH:
Climb to 3000 direct
COSIS and hold.

D-ATIS	GREENSBORO APP CON		GREENSBORO TOWER		GND CON	CLNC DEL
128.55	124.35	269.225 (250°-049°)	119.1	290.325	121.9	348.6
	126.6	327.075 (050°-249°)				121.75

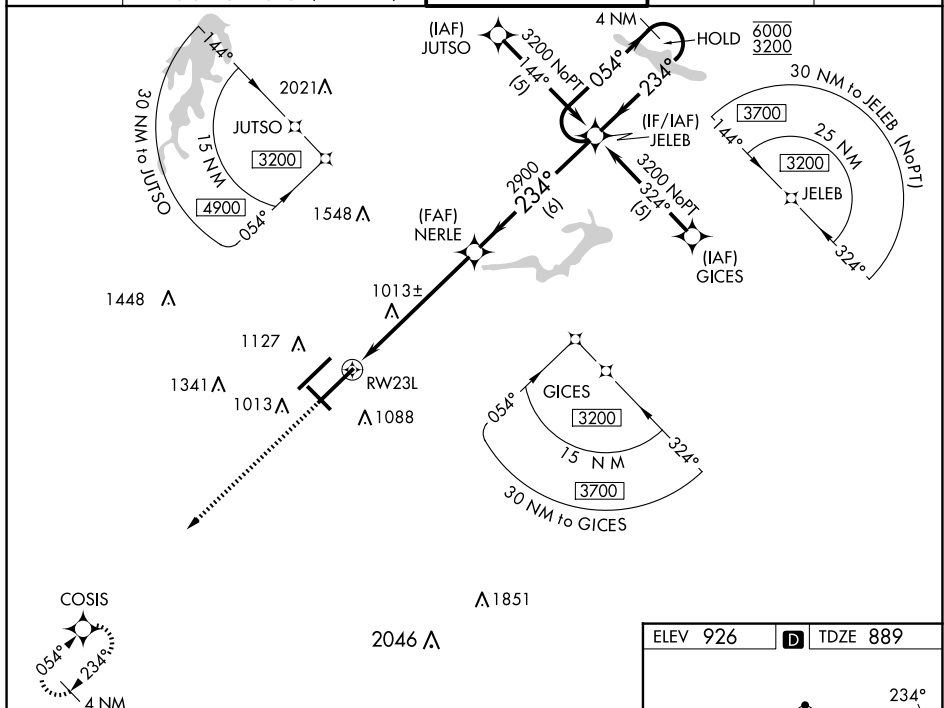


Diagram illustrating the RW23L approach procedure. The diagram shows a 4 NM Holding Pattern at 6000/3200. The approach path starts at 2900, turns 234 degrees, and then 054 degrees. Key points include RW23L, 1.1 NM to RW23L, 2900, and JELEB. The diagram also shows the VGS and RNAV glidepath not coincident (VGS Angle 3.00/TCH 55).