

LOC/DME I-GFN 111.15 Chan 48 (Y)	APP CRS 325°	Rwy Idg 6380 TDZE 902 Apt Elev 926
------------------------------------------------------	------------------------	---------------------------------------------------------------

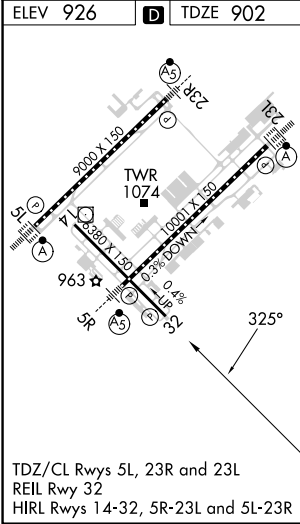
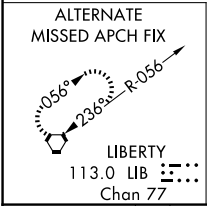
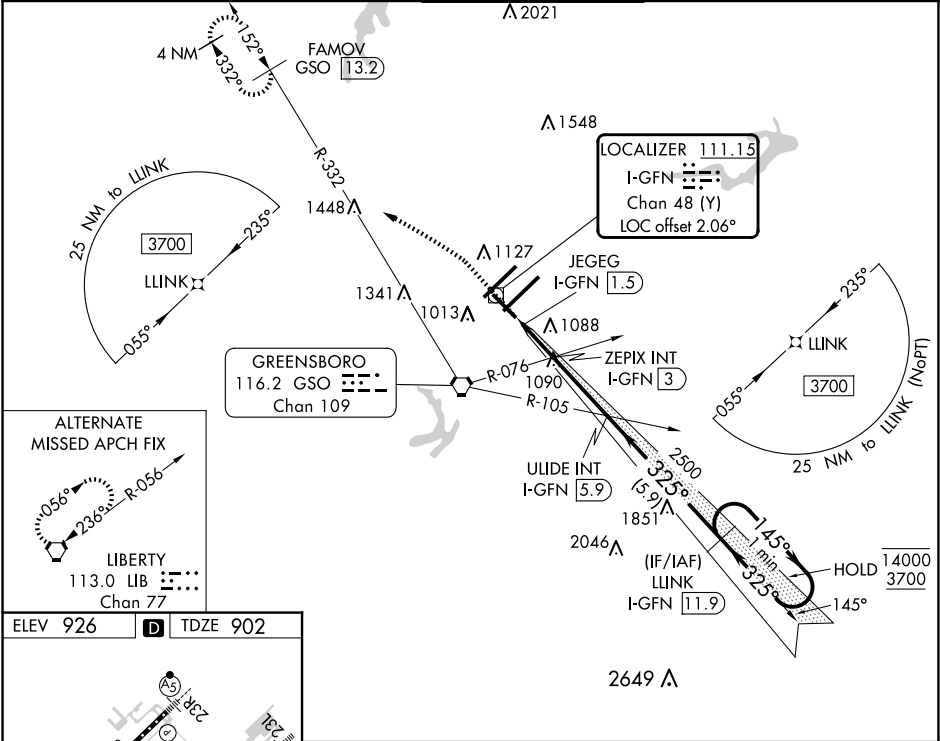
ILS Y or LOC Y RWY 32
PIEDMONT TRIAD INTL (GSO)

RNAV 1-GPS or RADAR required for procedure entry.
DME required.

▼ Rwy 32 helicopter visibility reduction below $\frac{3}{4}$ SM NA.

MISSED APPROACH: Climb to 1400 then climbing left turn to 3700 on heading 307° and GSO VORTAC R-332 to FAMOV/GSO 13.2 DME and hold.

D-ATIS 128.55	GREENSBORO APP CON 124.35 269.225 (250°-049°) 126.6 327.075 (050°-249°)	GREENSBORO TOWER 119.1 290.325	GND CON 121.9 348.6	CLNC DEL 121.75
-------------------------	---------------------------------------------------------------------------------------------	------------------------------------------	-------------------------------	---------------------------



1400	3700	GSO R-332	FAMOV GSO 13.2	ULIDE INT I-GFN 5.9	LLINK I-GFN 11.9	One Minute Holding Pattern
hdg 307°						
JEGEG I-GFN 1.5	ZEPIX INT I-GFN 3	2500	1600	2500	145°	4000
325°	325°	145°	3700			
0.4	1	0.6	2.9	5.9		
CATEGORY	A	B	C	D		
S-ILS 32		1152-3/4	250 (300-3/4)			
S-LOC 32	1400-1	498 (500-1)	1400-13/8	498 (500-13/8)		
CIRCLING	1440-1	514 (600-1)	1700-2 1/4	1700-2 1/2		
			774 (800-2 1/4)	774 (800-2 1/2)		

SE-2, 10 JUL 2025 to 07 AUG 2025

SE-2, 10 JUL 2025 to 07 AUG 2025