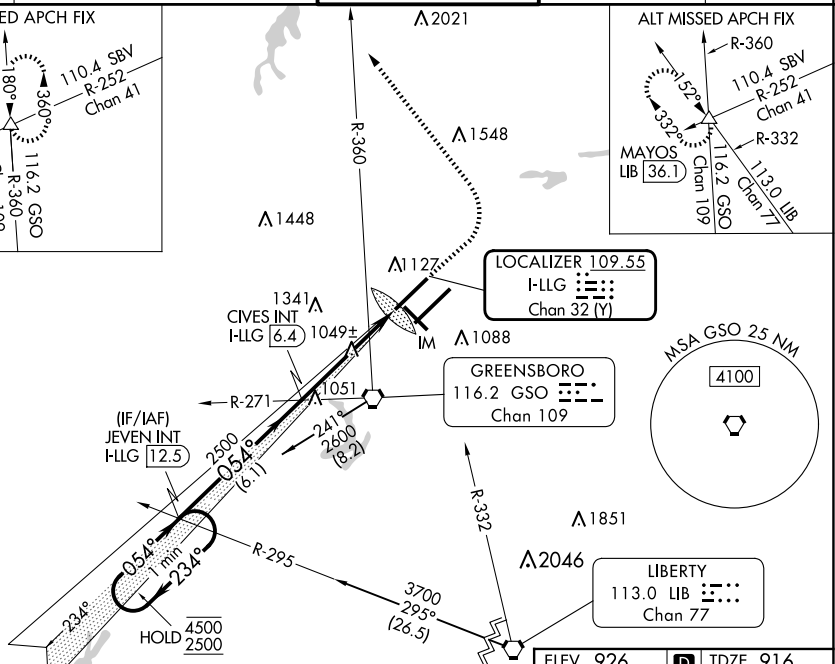


ILS or LOC RWY 5L
PIEDMONT TRIAD INTL (GSO)

MISSED APPROACH: Climb to 1400 then climbing left turn to 3100 on heading 330° and GSO VORTAC R-360 to MAYOS INT/GSO 16.9 DME and hold.

T Simultaneous approach authorized. For inop ALS, increase S-LOC 5L Cat C/D visibility to RVR 5500.



ELEV 926 D TDZE 916

TDZ/CL Rwy 5L, 23R and 23L
 REIL Rwy 32
 HIRL Rwy 14-32, 5R-23L and 5L-23R

Diagram illustrating the runway layout and associated navigation aids for Runway 32. The layout shows Runway 32 (5L-23R) with a length of 9000 X 150. Runway 23L is 10001 X 150. Runway 5R is 4380 X 150. The diagram includes a tower (TWR 1074), a 0.5% DOWN slope, a 0.1% slope, and a 054° heading. Various navigation aids like VORTAC (AS), VORT, and VORT are marked.

SE-2, 10 JUL 2025 to 07 AUG 2025

SE-2. 10 JUL 2025 to 07 AUG 2025