

LOC/DME	I-DB	APP CRS	Rwy Idg	9000
109.55		234°	TDZE	864
Chan 32 (Y)			Apt Elev	926

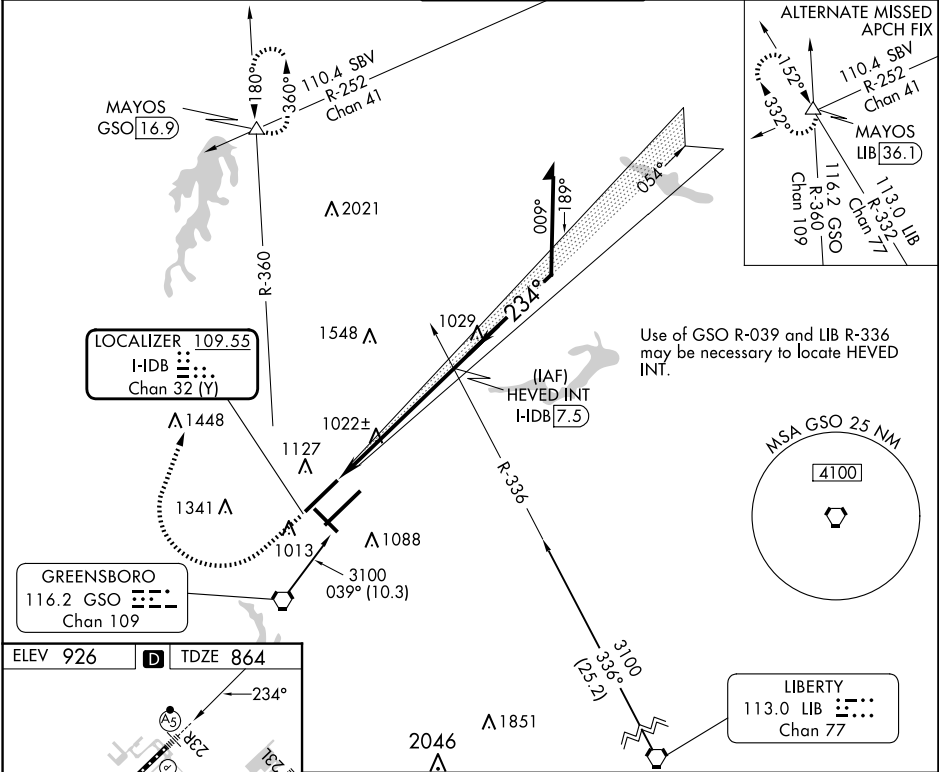
ILS or LOC RWY 23R  
PIEDMONT TRIAD INTL (GSO)

**Simultaneous approach authorized.**

**MALSR**

MISSED APPROACH: Climb to 1500 then climbing right turn to 3100 on heading 015° and GSO VORTAC R-360 to MAYOS INT/GSO 16.9 DME and hold.

D-ATIS	GREENSBORO APP CON	GREENSBORO TOWER	GND CON	CLNC DEL
128.55	124.35 269.225 (250°-049°)	119.1 290.325	121.9 348.6	121.75
	126.6 327.075 (050°-249°)			



ELEV 926 TDZE 864

**LOC 109.55**  
I-DB  
Chan 32 (Y)

**GREENSBORO**  
116.2 GSO  
Chan 109

234°

9000 X 150

23R

23L

234°

963

5R

5L

32

0.3% DOWN

0.0%

1000 X 150

1074

TWR

TDZ/CL Rwy 5L, 23R and 23L

REIL Rwy 32

HIRL Rwy 14-32, 5R-23L and 5L-23R

FAF to MAP 5.8 NM

Knots	60	90	120	150	180
Min:Sec	5:48	3:52	2:54	2:19	1:56

CATEGORY			
S-ILS 23R	1064/18		200 (200-½)
S-LOC 23R	1280/24	416 (400-½)	1280/40 416 (400-¾)
CIRCLING	1440-1	514 (600-1)	1700-2¼ 774 (800-2¼) 1700-2½ 774 (800-2½)

SE-2, 10 JUL 2025 to 07 AUG 2025

SE-2, 10 JUL 2025 to 07 AUG 2025