

LOC/DME I-LZY	APP CRS	Rwy Idg	10001
111.9	054°	TDZE	900
Chan 56		Apt Elev	926

ILS RWY 5R (SA CAT II)

PIEDMONT TRIAD INTL (GSO)

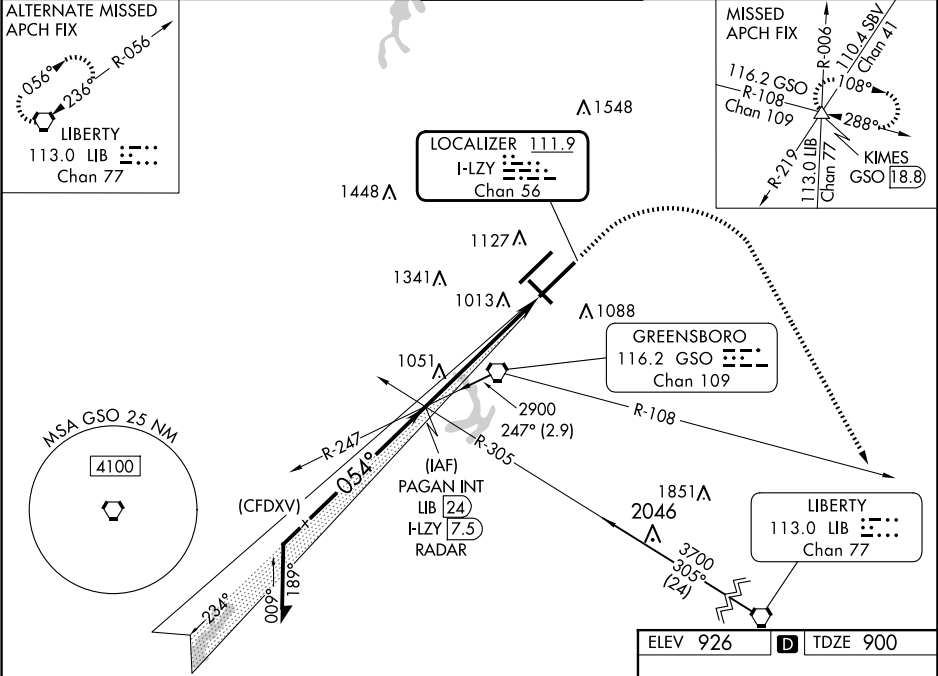
Simultaneous approach authorized.

REDUCED LIGHTING: Requires specific OPSPEC, MSPEC, or LOA approval and use of autoland or HUD to touchdown.

MALSR

MISSED APPROACH: Climb to 1600 then climbing right turn to 3000 on heading 139° and GSO VORTAC R-108 to KIMES INT/ GSO 18.8 DME and hold.

D-ATIS	GREENSBORO APP CON	GREENSBORO TOWER	GND CON	CLNC DEL
128.55	124.35 269.225 (250°-049°)	119.1 290.325	121.9 348.6	121.75
	126.6 327.075 (050°-249°)			



Remain within 10 NM

2900 234° 054° 2800

GS 3.00° TCH 53

5.7 NM 1000'

CATEGORY	A	B	C	D
S-ILS 5R	RA 122/12 100 DA 1000			

SA CATEGORY II ILS - SPECIAL AIRCREW & AIRCRAFT CERTIFICATION REQUIRED

ELEV 926 TDZE 900

TDZ/CL Rwy 5L, 23R and 23L
REIL Rwy 32
HIRL Rwy 14-32, 5R-23L and 5L-23R