

LOC/DME I-LLG	APP CRS	Rwy Idg	9000
109.55		TDZE	916
Chan 32 (Y)	054°	Apt Elev	926

ILS RWY 5L (CAT II & III)
PIEDMONT TRIAD INTL (GSO)

DME or RADAR required for procedure entry at LIB VORTAC.			
--	--	--	--

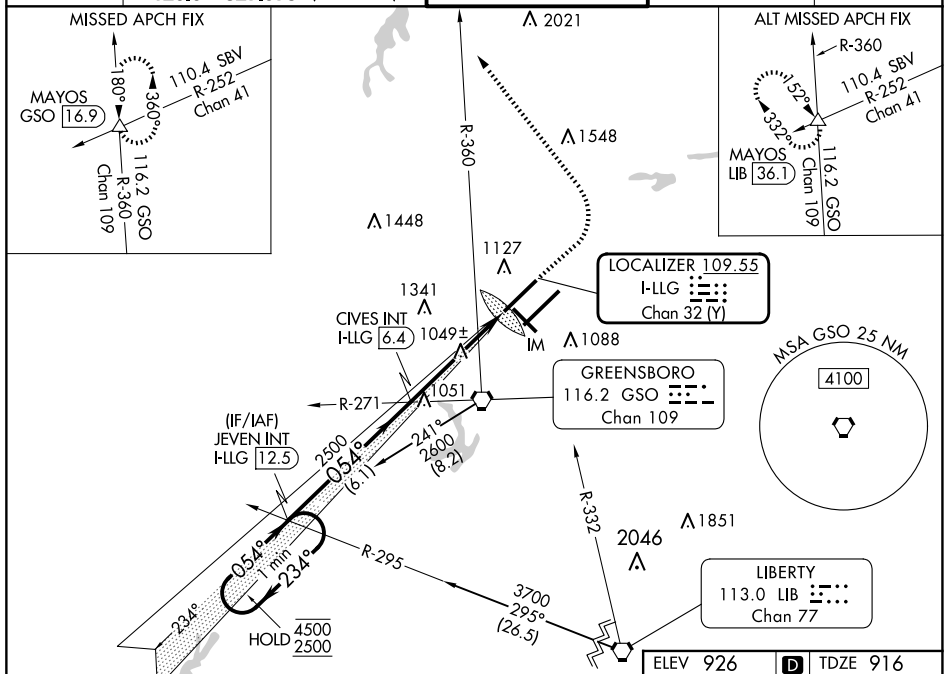
ALSF-2

MISSED APPROACH: Climb to 1400 then climbing left turn to 3100 on heading 330° and GSO VORTAC R-360 to MAYOS INT/GSO 16.9 DME and hold.

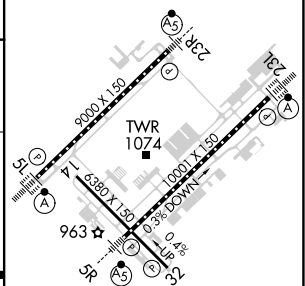
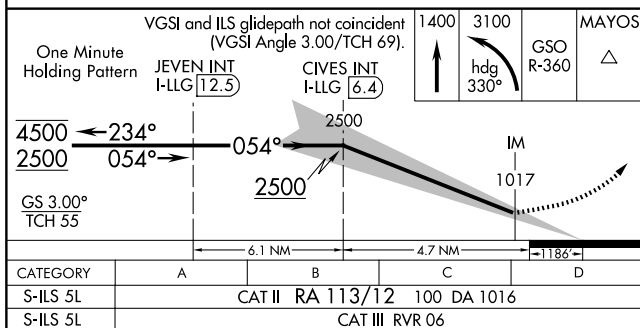
Simultaneous approach authorized.



D-ATIS	GREENSBORO APP CON		GREENSBORO TOWER		GND CON	CLNC DEL
128.55	124.35	269.225 (250°-049°)	119.1	290.325	121.9	348.6
	126.6	327.075 (050°-249°)				121.75



SE-2, 10 JUL 2025 to 07 AUG 2025



CATEGORY II & III ILS - SPECIAL AIRCREW
& AIRCRAFT CERTIFICATION REQUIRED

TDZ/CL Rwy 5L, 23R and 23L
REIL Rwy 32
HIRL Rwy 14-32, 5R-23L and