

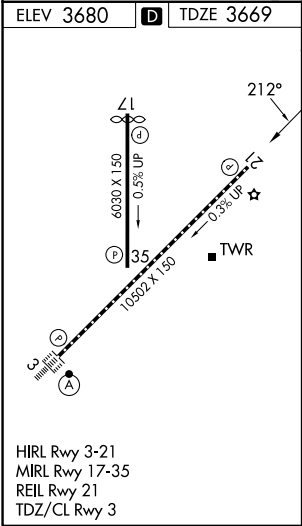
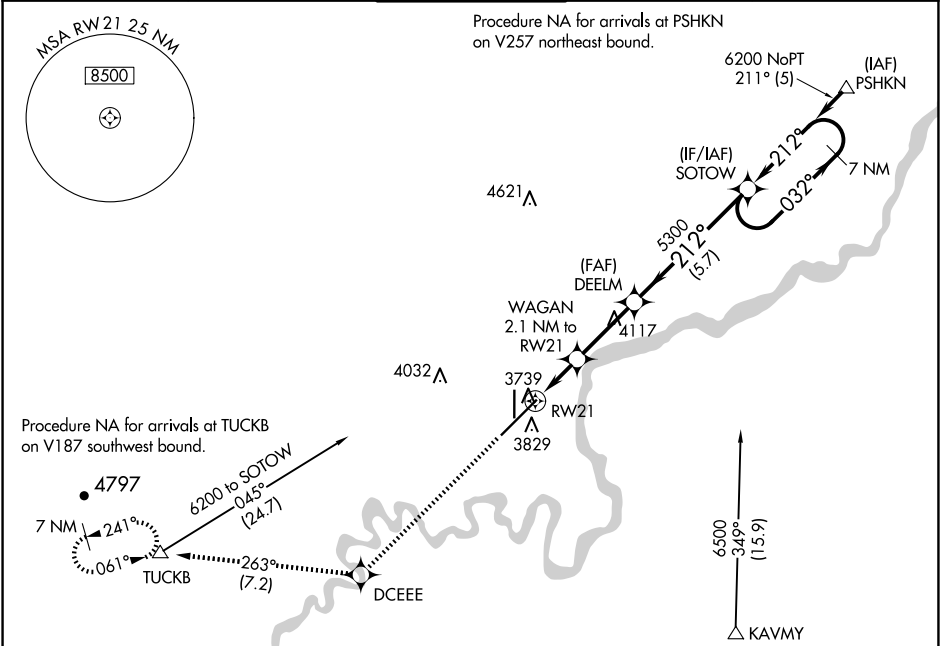
WAAS CH 90221 W21A	APP CRS 212°	Rwy Ldg TDZE 3669 Apt Elev 3680
--	------------------------	---

RNAV (GPS) Y RWY 21

GREAT FALLS INTL (GTF')

RNP APCH - GPS.	MISSED APPROACH: Climb to 8000 direct DCEEE and on track 263° to TUCKB and hold, continue climb-in-hold to 8000.
<div>▼</div> For uncompensated Baro-VNAV systems, LNAV/VNAV NA below -24°C or above 49°C.	

ATIS 126.6 269.0	GREAT FALLS APP CON 128.6 379.175	GREAT FALLS TOWER 118.7 282.2	GND CON 121.7 348.6	CLNC DEL 121.7 348.6
----------------------------	---	---	-------------------------------	--------------------------------



Procedure NA for arrivals at KAVMY on V187 eastbound.				
8000 ↑	DCEEE ✦	tr 263°	TUCKB △	VGSI and RNAV glidepath not coincident (VGSI Angle 3.00/TCH 75). SOTOW 7 NM Holding Pattern
* LNAV only.	WAGAN 2.1 NM to RW21	DEELM 5300	212°	032° → 6200 ← 212°
	* 0.8 NM to RW21	4380*	5300	GP 3.00° TCH 59
0.8	1.3 NM	2.9 NM	5.7 NM	
CATEGORY	A	B	C	D
LPV DA	3869/40 200 (200-¾)			
LNAV/ VNAV DA	3927/45 258 (300-¾)			
LNAV MDA	4000/55 331 (400-1)	4000/50 331 (400-1)		
CIRCLING	4140-1 460 (500-1)	4340-1¾ 660 (700-1¾)	4420-2¼ 740 (800-2¼)	