

APP CRS	Rwy Ldg	10502
212°	TDZE	3669
	Apt Elev	3680

RNAV (RNP) Z RWY 21
GREAT FALLS INTL (GTF)

RNP AR APCH - GPS.

T For uncompensated Baro-VNAV systems, procedure NA below -24°C or above 54°C.

MISSED APPROACH: Climb to 8000 on track 212° to ZETNI, right turn to UPIGY and on track 271° to TUCKB and hold, continue climb-in-hold to 8000.

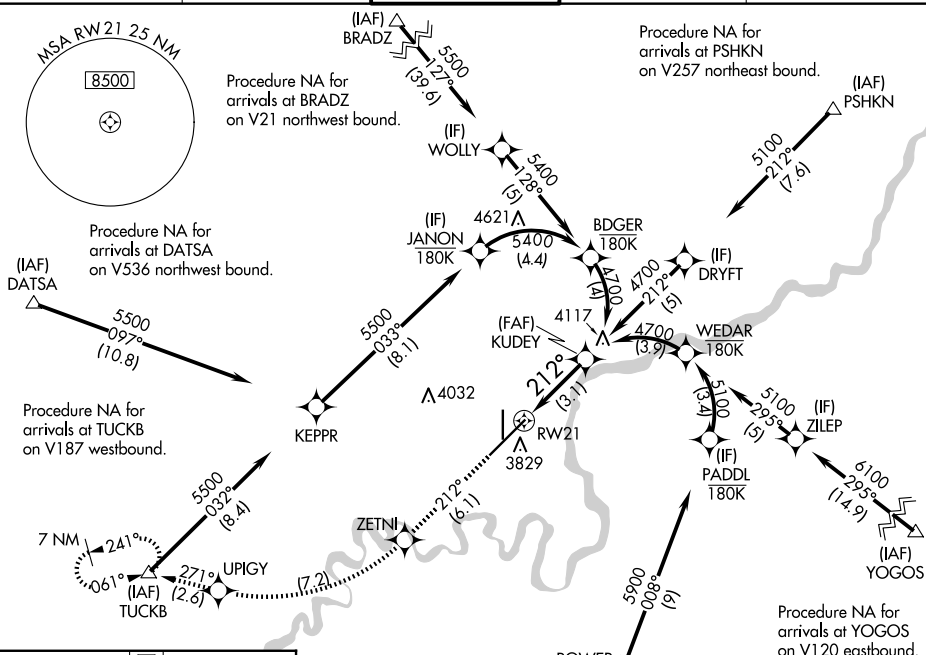
ATIS
126.6 269.0

GREAT FALLS APP CON
128,6 379,175

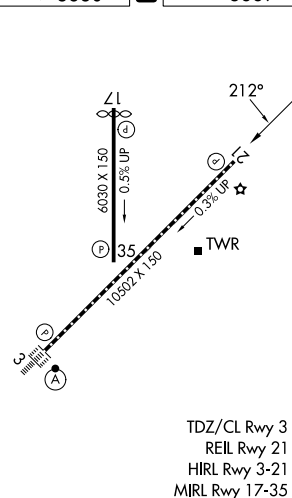
GREAT FALLS TOWER
118.7 282.2

GND CON
121.7 348.6





CLNC DEL
121.7 348.6



ELEV 3680	D	TDZE 3669
-----------	----------	-----------



Procedure NA for arrivals at URELE on V536 southbound.

8000 ↑ tr 212°	ZETNI 		UPIGY 	tr 271°	TUCKB 
----------------------	--	---	--	------------	--

VGSI and RNAV glidepath not coincident
(VGSI Angle 3.00/TCH 75).

See planview for multiple IF locations.

CATEGORY	A	B	C	D
RNP 0.10 DA		3942/45	273 (300-7%)	
RNP 0.30 DA		3992/50	323 (400-1)	

AUTHORIZATION REQUIRED

RNAV (RNP) Z RWY 21