

WAAS  
CH **49240**  
**W17A**

APP CRS  
**167°**

Rwy Ldg  
TDZE  
Apt Elev  
**5800**  
**3660**  
**3680**

**RNAV (GPS) RWY 17**

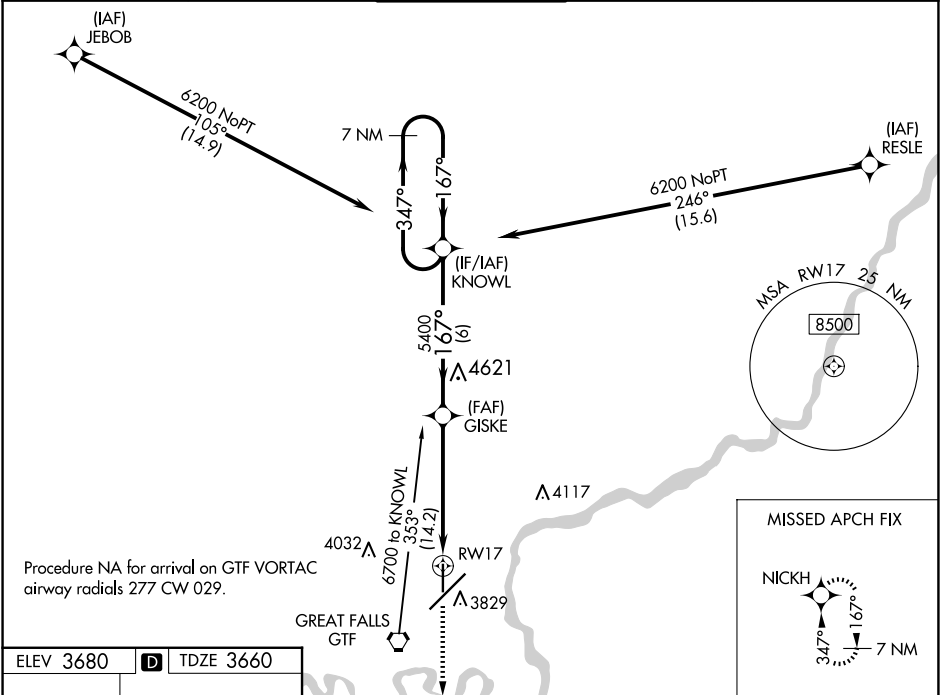
**GREAT FALLS INTL (GTF')**

RNP APCH - GPS.

▼ For uncompensated Baro-VNAV systems, LNAV/VNAV NA below -26°C or above 52°C.

▲ MISSED APPROACH: Climb to 9000 direct NICKH and hold, continue climb-in-hold to 9000.

ATIS <b>126.6 269.0</b>	GREAT FALLS APP CON <b>128.6 379.175</b>	GREAT FALLS TOWER <b>118.7 282.2</b>	GND CON <b>121.7 348.6</b>	CLNC DEL <b>121.7 348.6</b>
----------------------------	---	---	-------------------------------	--------------------------------



ELEV 3680 **D** TDZE 3660

167°

6030 X 1.50

0.5% UP

35

10502 X 1.50

TWR

TDZ/CL Rwy 3

REIL Rwy 21

HIRL Rwy 3-21

MIRL Rwy 17-35

9000 NICKH

\*LNAV only.

\*1 NM to RWY 17

GISKE 5400

KNOWL 7 NM Holding Pattern

GP 3.00° TCH 47

CATEGORY	A	B	C	D
LPV DA		3910-3/4	250 (300-3/4)	
LNAV/VNAV DA		3910-3/4	250 (300-3/4)	
LNAV MDA		4000-1	340 (400-1)	
<b>C</b> CIRCLING	4140-1	460 (500-1)	4340-1 3/4 660 (700-1 3/4)	4420-2 1/4 740 (800-2 1/4)

NW-1, 10 JUL 2025 to 07 AUG 2025

NW-1, 10 JUL 2025 to 07 AUG 2025