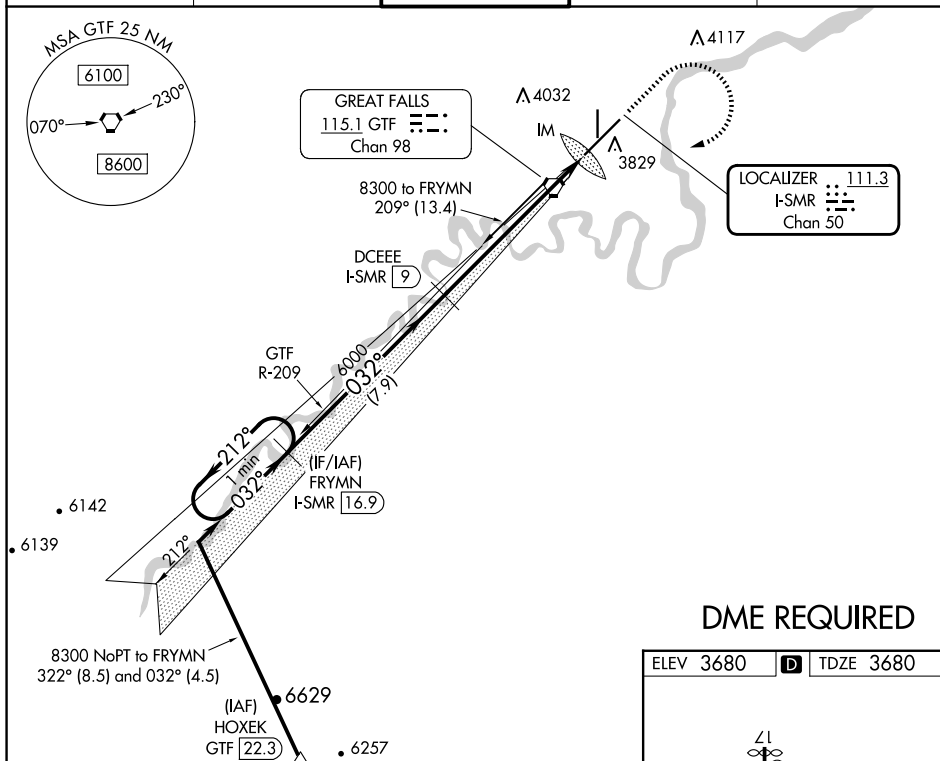


LOC/DME I-SMR <b>111.3</b> Chan <b>50</b>	APP CRS <b>032°</b>	Rwy Ldg <b>10502</b> TDZE <b>3680</b> Apt Elev <b>3680</b>
---	------------------------	--

ILS or LOC RWY 3  
GREAT FALLS INTL (GTF)

<div><div><div></div><div></div></div></div> DME required.		ALSF-2 <div><div></div><div></div></div>	MISSED APPROACH: Climb to 5000 then climbing right turn to 8300 direct GTF VORTAC then on GTF VORTAC R-209 to FRYMN/I-SMR 16.9 DME and hold.		
ATIS 126.6 269.0	GREAT FALLS APP CON 128.6 379.175	GREAT FALLS TOWER 118.7 282.2	GND CON 121.7 348.6	CLNC DEL 121.7 348.6	



## DME REQUIRED

[illegible]

VGSI and ILS glidepath not coincident (VGSI Angle 3.00/TCH 70).

CATEGORY	A	B	C	D
S-ILS 3		3880/18	200 (200-½)	
S-LOC 3	4140/24	460 (500-½)	4140/45	460 (500-¾)
<b>C</b> CIRCLING	4140-1	460 (500-1)	4340-1¾ 660 (700-1¾)	4420-2¼ 740 (800-2¼)