

LOC/DME I-SMR
111.3
Chan **50**

APP CRS
032°

Rwy Ldg
TDZE **3680**
Apt Elev **3680**

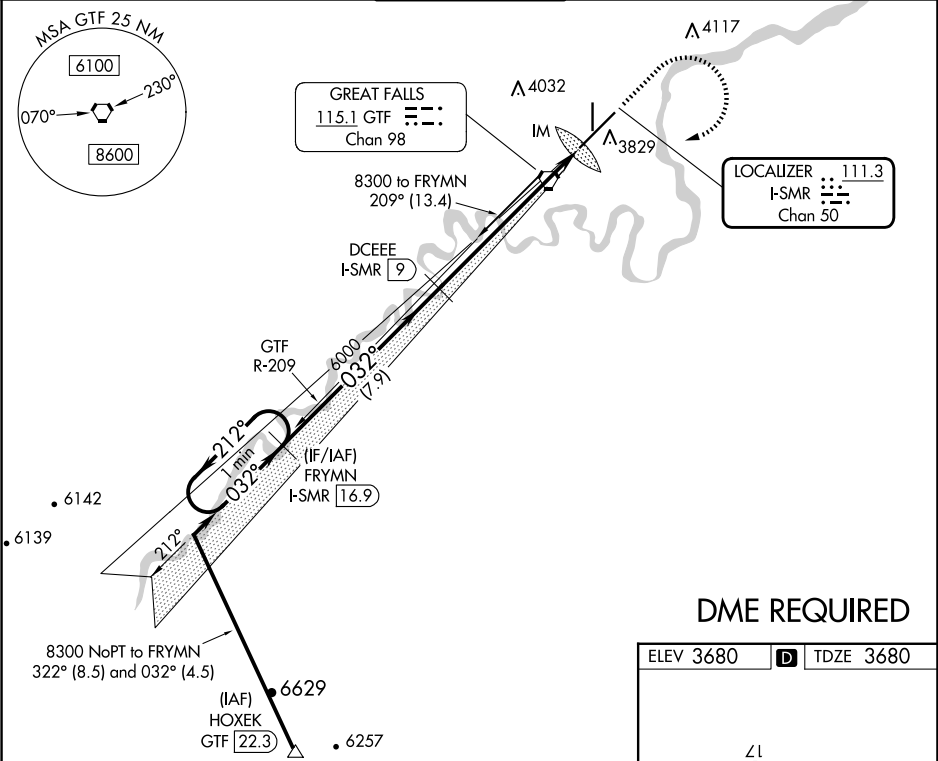
ILS RWY 3 (SA CAT I)
GREAT FALLS INTL (GTF)

Requires specific OPSPEC, MSPEC, or LOA approval and use of HUD to DH. DME required.

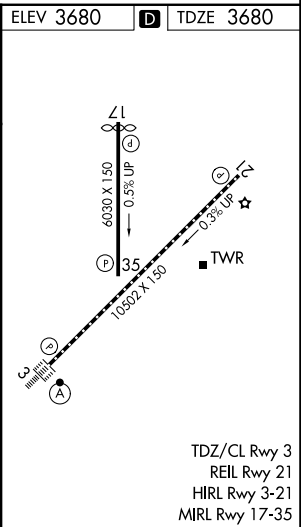
ALSF-2

MISSED APPROACH: Climb to 5000 then climbing right turn to 8300 direct GTF VORTAC then on GTF VORTAC R-209 to FRYMN/I-SMR 16.9 DME and hold.

ATIS 126.6 269.0	GREAT FALLS APP CON 128.6 379.175	GREAT FALLS TOWER 118.7 282.2	GND CON 121.7 348.6	CLNC DEL 121.7 348.6
----------------------------	---	---	-------------------------------	--------------------------------



DME REQUIRED



VGSI and ILS glidepath not coincident
(VGSI Angle 3.00/TCH 70).

One Minute Holding Pattern

FRYMN
I-SMR 16.9

5000

8300

GTF

GTF R-209

FRYMN
I-SMR 16.9

DCEEE
I-SMR 9

Use I-SMR DME when on the localizer course.

8300

← 212°

032° →

032°

6000

GS 3.00°

TCH 54

6000

IM

CATEGORY	A	B	C	D
5-ILS 3	RA 140/14 150 DA 3830			

SA CATEGORY I ILS-SPECIAL AIRCREW & AIRCRAFT CERTIFICATION REQUIRED