


WAAS CH <b>65710</b> <b>W35A</b>	APP CRS <b>352°</b>	Rwy Idg <b>7852</b> TDZE <b>1883</b> Apt Elev <b>1887</b>
--	------------------------	---

RNAV (GPS) RWY 35

GREAT BEND MUNI (GBD)

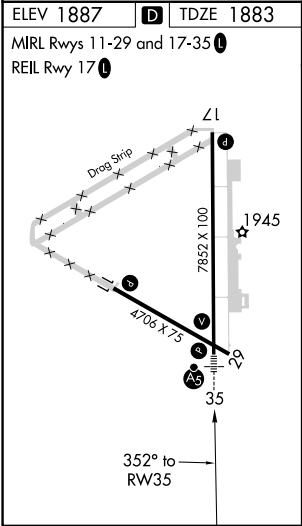
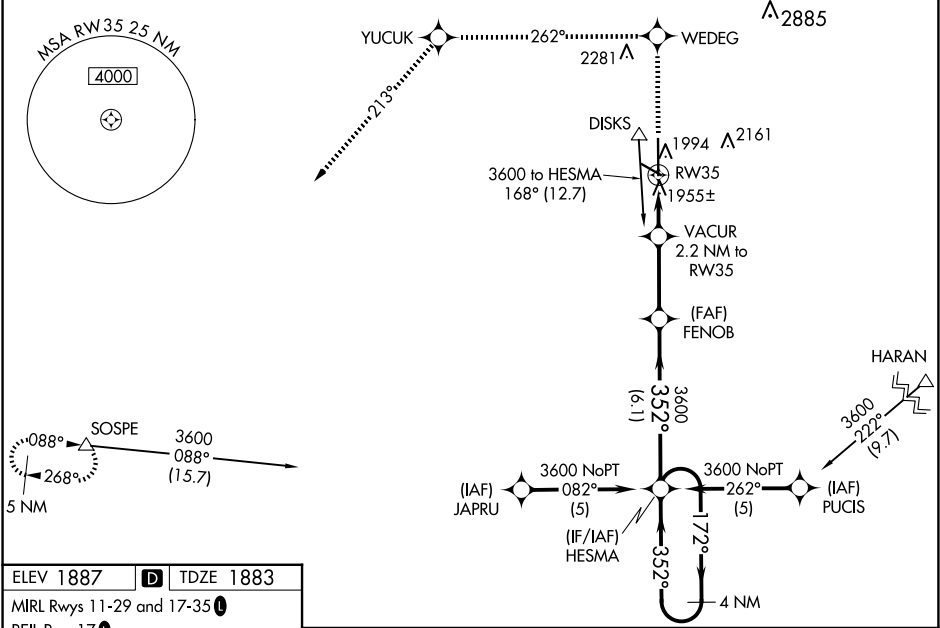
**⚠** For uncompensated Baro-VNAV systems, LNAV/VNAV NA below -18°C (0°F) or above 54°C (130°F). DME/DME RNP-0.3 NA. When local altimeter setting not received, use Russell Muni altimeter setting: increase LPV DA to 2248 feet and all visibilities ¼ SM; increase LNAV/VNAV DA to 2299 feet and all visibilities ¼ SM; increase all MDAs 80 feet and visibility Cats C and D ¼ SM. For inop MALSR increase LPV all Cats visibility to 1 mile. For inop MALSR when using Russell Muni altimeter setting increase LPV all Cats and LNAV Cat D visibility to 1¼ mile. Baro-VNAV and VDP NA when using Russell Muni altimeter setting. Inop table does not apply to LNAV Cat D.

MALSR



MISSED APPROACH: Climb to 4500 direct WEDEG and via 262° track to YUCUK then via 213° track to SOSPE and hold.

AWOS-3PT <b>119.275</b>	KANSAS CITY CENTER <b>118.8 322.425</b>	UNICOM <b>122.8 (CTAF) 1</b>
----------------------------	--	---------------------------------



4500	WEDEG	262° tr	YUCUK	213° tr	SOSPE
*LNAV only					
VACUR 2.2 NM to RW35					
*0.9 NM to RW35					
2620*					
0.9 1.3 NM 3 NM 6.1 NM					
CATEGORY	A	B	C	D	
LPV DA	2171-½		288 (300-½)		
LNAV/VNAV DA	2222-¾		339 (400-¾)		
LNAV MDA	2220-½		337 (400-½)		2220-1 337 (400-1)
CIRCLING	2320-1 433 (500-1)	2340-1 453 (500-1)	2520-1¾ 633 (700-1¾)	2640-2½ 753 (800-2½)	