

WAAS CH 86799 W35A	APP CRS 353°	Rwy Idg TDZE 1847 Apt Elev 1847
--	------------------------	---

RNAV (GPS) RWY 35

CENTRAL NEBRASKA RGNL (GRI)

RNP APCH - GPS.

▼

For uncompensated Baro-VNAV systems, LNAV/VNAV NA below -21°C or above 54°C.

▲

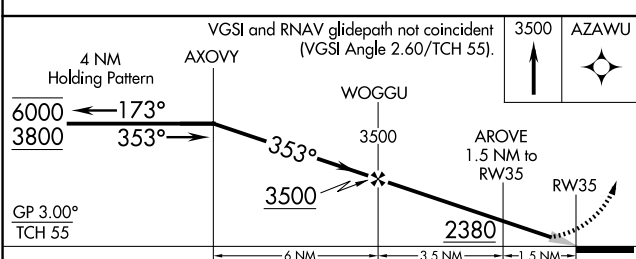
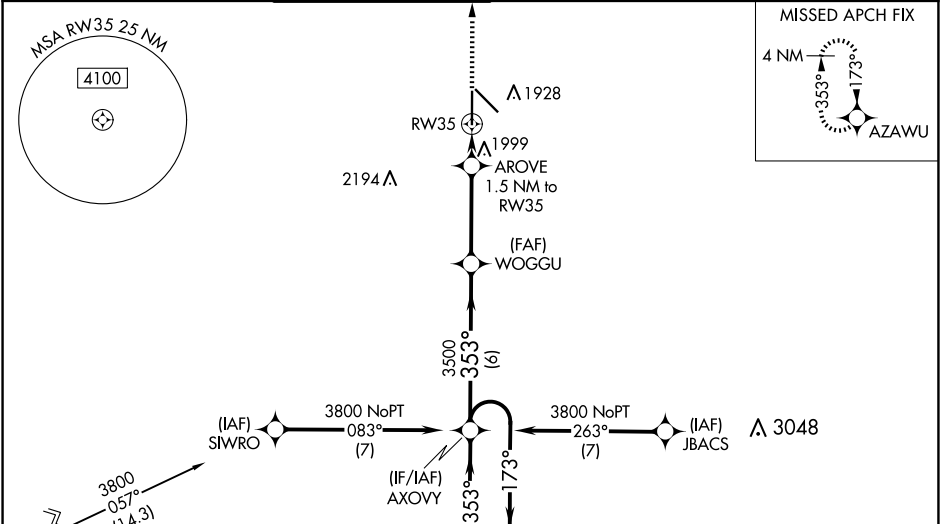
Baro-VNAV NA when using Aurora altimeter setting. Circling Rwy 13 and 17 NA at night.

For inop ALS, increase LNAV Cats C/D visibility to RVR 6000. When local altimeter setting not received, use Aurora altimeter setting and increase LPV DA to 2088 feet; increase LNAV/VNAV DA to 2328 feet and all visibilities to RVR 5000; increase all MDAs 60 feet and LNAV visibility Cats C/D to RVR 5000 and Circling visibility Cats C/D ¼ SM. For inop ALS when using Aurora altimeter setting, increase LNAV/VNAV all Cats visibility to 1¾ SM, increase LNAV Cats C/D visibility to 1¾ SM.

MALSR

MISSED APPROACH:
Climb to 3500 direct
AZAWU and hold.

ATIS 127.4	MINNEAPOLIS CENTER 119.4 278.8	GRAND ISLAND TOWER★ 118.2 (CTAF) 0 259.3	GND CON 121.9 259.3	CLNC DEL 121.9	CLNC DEL 126.05 (when twr closed)	UNICOM 122.95
----------------------	--	--	-------------------------------	--------------------------	--	-------------------------



CATEGORY	A	B	C	D
LPV DA		2047/24	200 (200-½)	
LNAV/VNAV DA		2287/40	440 (500-¾)	
LNAV MDA	2260/24	413 (500-½)	2260/40	413 (500-¾)
CIRCLING	2300-1	453 (500-1)	2400-1½ 553 (600-1½)	2560-2¼ 713 (800-2¼)

