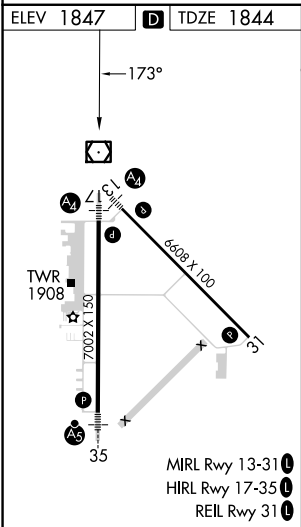
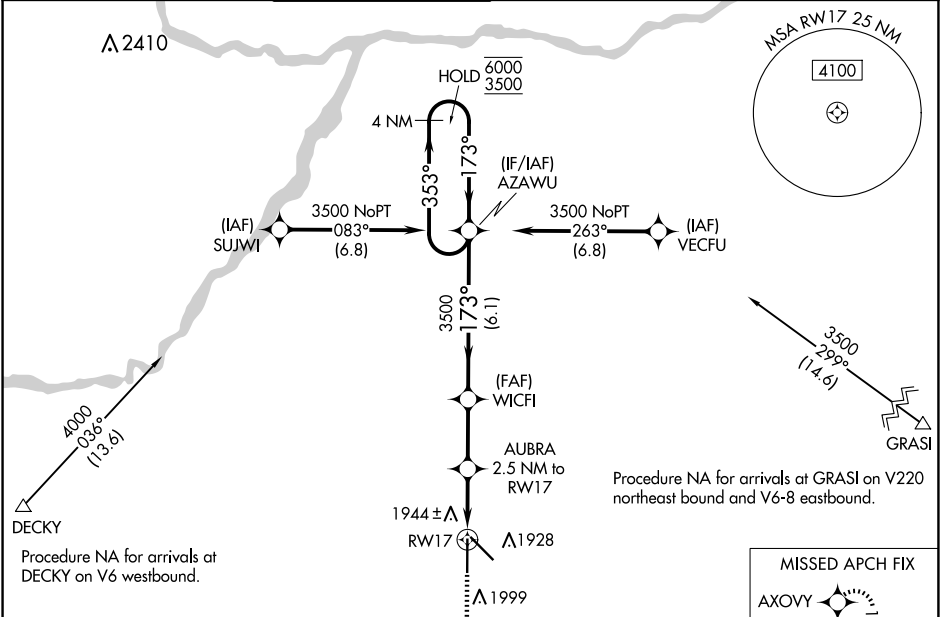



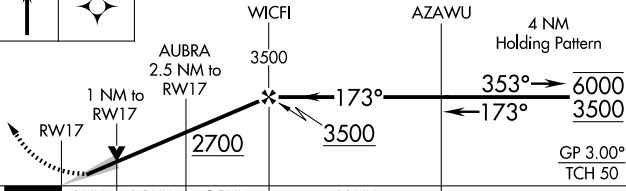


WAAS CH 60999 W17A	APP CRS 173°	Rwy Idg TDZE 1844 Apt Elev 1847	7002
--	------------------------	---	-------------

RNAV (GPS) RWY 17
CENTRAL NEBRASKA RGNL (GRI)

RNP APCH - GPS.		MALSP		MISSED APPROACH: Climb to 3800 direct AXOVY and hold.		
⚠ Inop table does not apply to LPV. For uncompensated Baro-VNAV systems, LNAV/VNAV NA below -23°C or above 54°C. For inop ALS, increase LNAV/VNAV all Cats visibility to ¾ SM.		A4				
ATIS 127.4	MINNEAPOLIS CENTER 119.4 278.8	GRAND ISLAND TOWER★ 118.2 (CTAF) 0 259.3	GND CON 121.9 259.3	CLNC DEL 121.9	CLNC DEL 126.05 (when twr closed)	UNICOM 122.95



2194 A				
 3800		AXOVY 		
VGSI and RNAV glidepath not coincident (VGSI Angle 3.00/TCH 38).				
CATEGORY	A	B	C	D
LPV DA	2044- ³ / ₄ 200 (200- ³ / ₄)			
LNAV/VNAV DA	2125- ³ / ₄ 281 (300- ³ / ₄)			
LNAV MDA	2200- ³ / ₄ 356 (400- ³ / ₄)			
CIRCLING	2300-1	453 (500-1)	2400-1 ¹ / ₂ 553 (600-1 ¹ / ₂)	2560-2 ¹ / ₄ 713 (800-2 ¹ / ₄)