

APP CRS
128°

Rwy Idg
6608

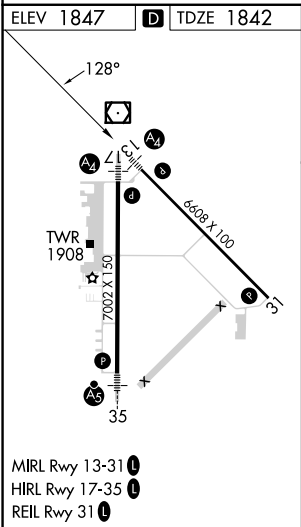
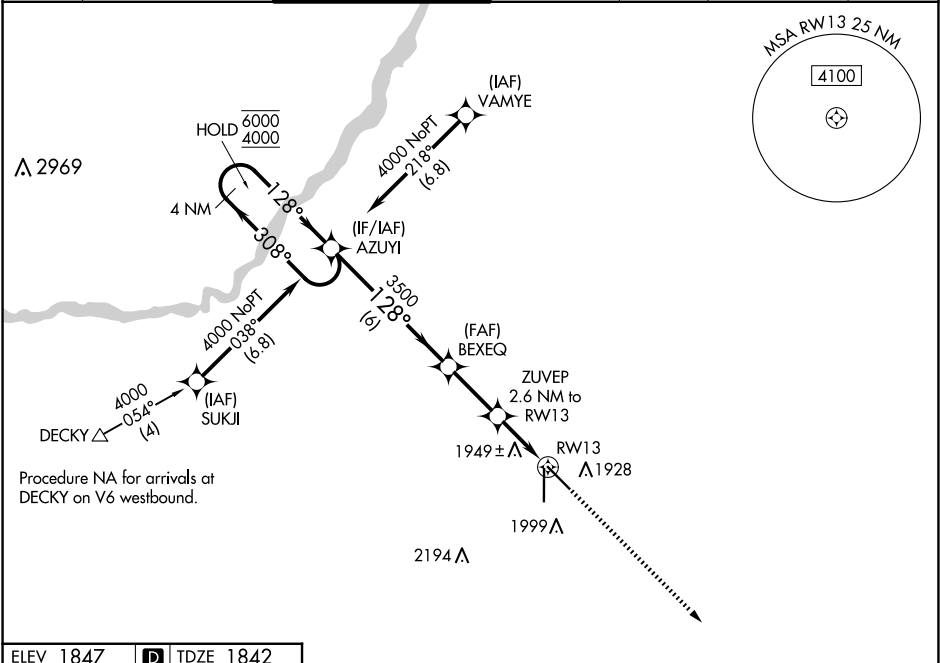
TDZE
1842

Apt Elev
1847

RNAV (GPS) RWY 13

CENTRAL NEBRASKA RGNL (GRI)

RNP APCH - GPS.				MALSS 		MISSED APPROACH: Climb to 4100 direct AGEKY and hold.	
ATIS 127.4	MINNEAPOLIS CENTER 119.4 278.8	GRAND ISLAND TOWER★ 118.2 (CTAF) 0 259.3	GND CON 121.9 259.3	CLNC DEL 121.9	CLNC DEL 126.05 (when twr closed)	UNICOM 122.95	



VGSi and descent angles not coincident (VGSi Angle 3.00/TCH 35).				4100	AGEKY
4 NM Holding Pattern				↑	✧
6000 ← 308° → 128° → 3500				ZUVEP 2.6 NM to RW13	
				3.00° TCH 45	
				2700	
				1 NM to RW13	
				RW13	
				6 NM	
				2.5 NM	
				1.5 NM	
				1 NM	
CATEGORY	A		B	C	D
LNAV MDA	2200-¾		358 (400-¾)		
CIRCLING	2300-1		453 (500-1)		2400-1½ 553 (600-1½)
					2560-2¼ 713 (800-2¼)