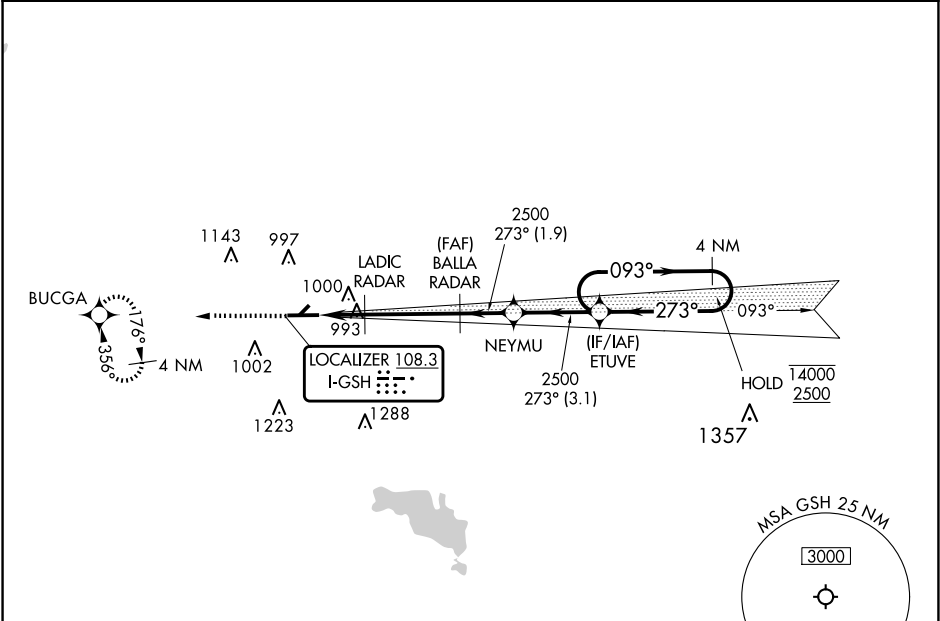


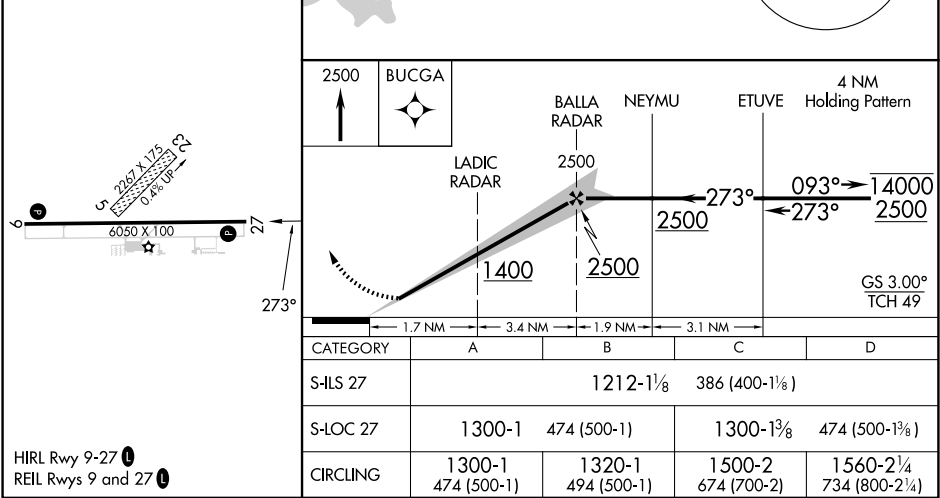
LOC I-GSH 108.3	APP CRS 273°	Rwy Ldg TDZE Apt Elev	6050 826 826
---------------------------	------------------------	-----------------------------	---

ILS or LOC RWY 27
GOSHEN MUNI (GSH)

RNP APCH - GPS. RADAR required to define BALLA and LADIC.			MISSED APPROACH: Climb to 2500 direct BUGCA and hold.
Circling NA to Rwy 5 and 23. Rwy 27 helicopter visibility reduction below 3/4 SM NA. When local altimeter setting not received, use ASW altimeter setting: increase DA to 1251 feet and all visibilities 1/8 SM; increase all MDAs 40 feet; increase Cat D Circling visibility 1/4 SM.			
ASOS 121.45	SOUTH BEND APP CON ★ 132.05 257.8	CLNC DEL 125.25	UNICOM 123.05 (CTAF) 0



ELEV 826	TDZE 826
----------	----------



EC-2, 10 JUL 2025 to 07 AUG 2025

EC-2, 10 JUL 2025 to 07 AUG 2025