

TACAN Y RWY 8

TACAN GSB Chan 112	APCH CRS 081°	Rwy Idg 11,760 TDZE 73 Arpt Elev 109
------------------------------	-------------------------	---

[USAF]

SEYMOUR JOHNSON AFB (KGSB)

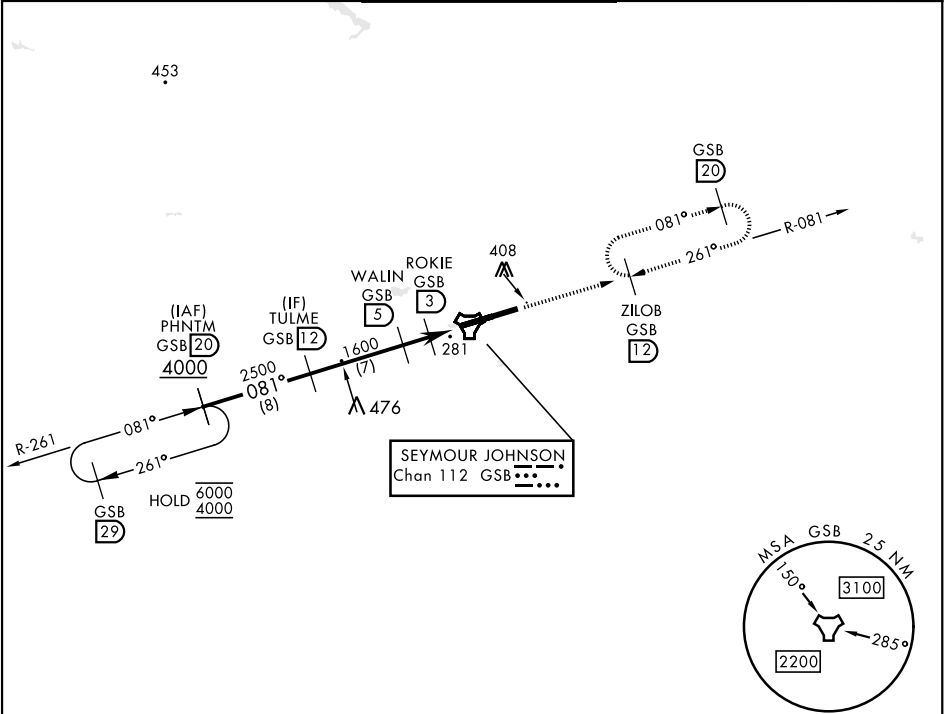
▼ * When ALS inop, increase CAT AB RVR to 55, vis to 1 mile, CAT CDE vis to 1½ miles.
** Circling N of Rwy 8-26 not authorized.

ALSF-1

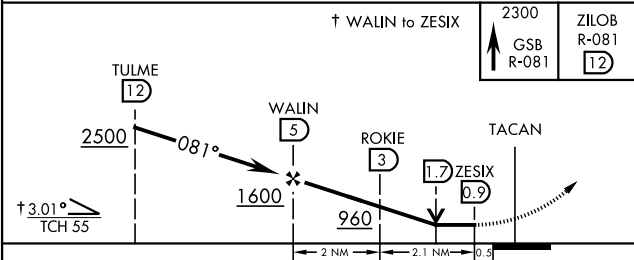
A1

MISSED APPROACH: Climb to 2300 via GSB R-081 to ZILOB and hold.

ATIS ★ 317.625	APP CON 123.7 290.9 (258°- 110°) 119.7 273.6 (111°- 257°)	TOWER ★ 126.25 370.875	GND CON 132.45 275.8	CLNC DEL 128.025 270.8
--------------------------	---	----------------------------------	--------------------------------	----------------------------------



EMERG SAFE ALT 100 NM 3700



ELEV 109

TDZE 73

CATEGORY	A	B	C	D	E
S-8 *	540/24 467 (500-½)		540/50 467 (500-1)		
CIRCLING **	580-1 471 (500-1)	600-1 491 (500-1)	680-1½ 571 (600-1½)	740-2 631 (700-2)	740-2¼ 631 (700-2¼)

HIRL Rwy 8-26

TACAN Y RWY 8

SE-2, 10 JUL 2025 to 07 AUG 2025

SE-2, 10 JUL 2025 to 07 AUG 2025