

GOLDSBORO, NORTH CAROLINA

TACAN Y RWY 26

TACAN GSB Chan 112	APCH CRS 261°	Rwy Idg 11,760 TDZE 109 Arpt Elev 109
------------------------------	-------------------------	--

[USAF]

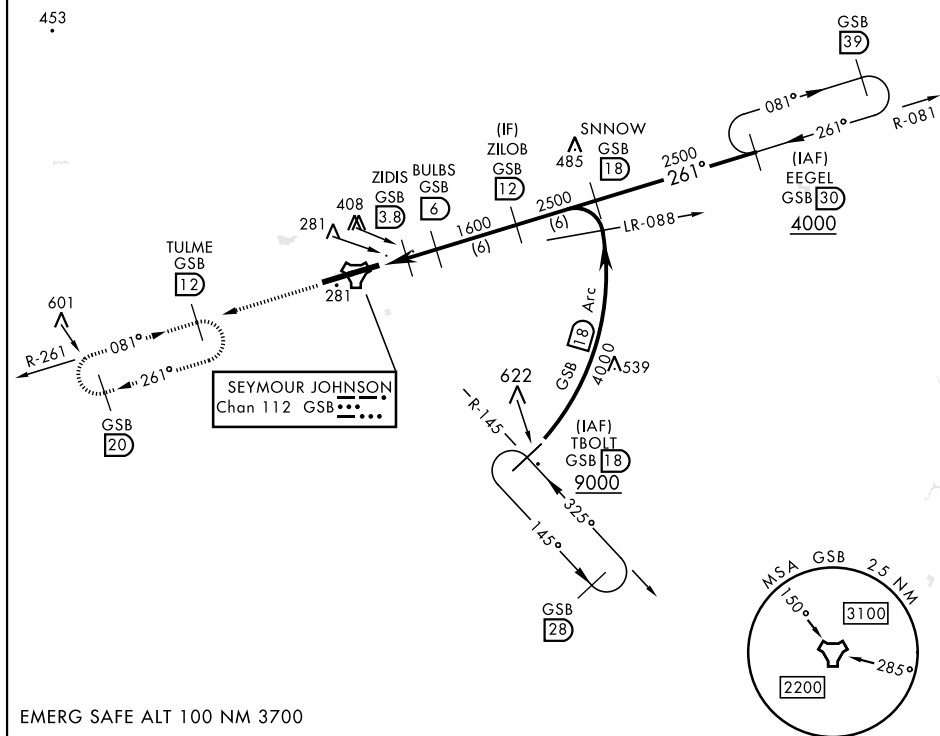
SEYMOUR JOHNSON AFB (KGSB)

T * When ALS inop, increase CAT AB RVR to 55, vis to 1 mile, CAT CDE vis to 1 1/4 miles.

ALSF-1

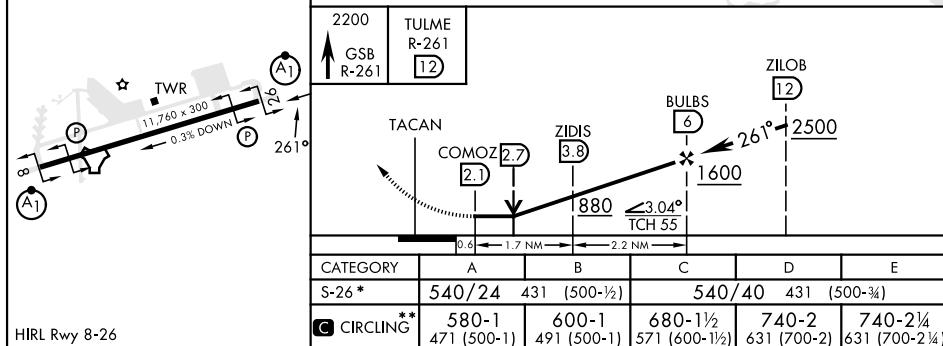
MISSED APPROACH: Climb to 2200 via GSB R-261 to TULME and hold.

ATIS ★ 317.625	APP CON 123.7 290.9 (258° 110°) 119.7 273.6 (111° 257°)	TOWER ★ 126.25 370.875	GND CON 132.45 275.8	CLNC DEL 128.025 270.8
-------------------	---	---------------------------	-------------------------	---------------------------



EMERG SAFE ALT 100 NM 3700

ELEV	109		TDZE	109
------	-----	--	------	-----



GOLDSBORO, NORTH CAROLINA

35° 20' N-77° 58' W

SEYMOUR JOHNSON AFB (KGSB)

TACAN Y RWY 26

SE-2, 10 JUL 2025 to 07 AUG 2025

SE-2, 10 JUL 2025 to 07 AUG 2025