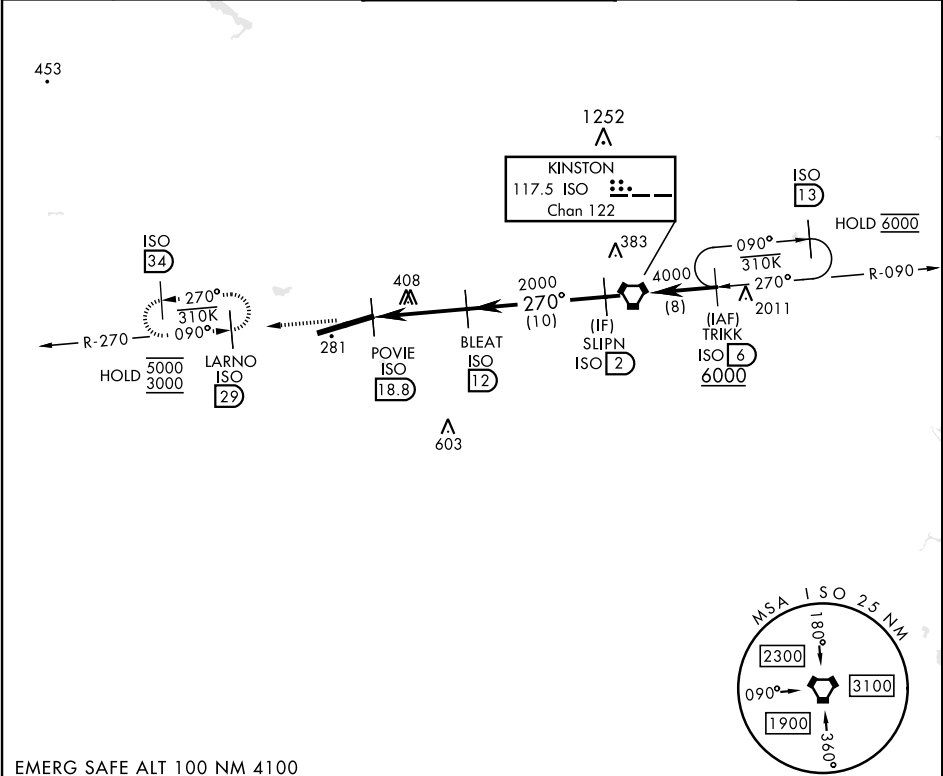


KINSTON ISO 117.5 Chan 122	APCH CRS 270°	Rwy Idg TDZE Arprt Elev N/A N/A 109	[USAF]	SEYMOUR JOHNSON AFB (KGSB)
Circling not authorized from Rwy 8 clockwise to RWY 26.			MISSED APPROACH: Climb to 3000 via ISO VORTAC R-270 to LARNO and hold; continue climb-in-hold to 3000.	
ATIS ★ 317.625	APP CON 123.7 290.9 (258°- 110°) 119.7 273.6 (111°- 257°)	TOWER ★ 126.25 370.875	GND CON 132.45 275.8	CLNC DEL 128.025 270.8



EMERG SAFE ALT 100 NM 4100

ELEV 109

TDZE N/A

HIRL Rwy 8-26

FAF to MAP 6.8 NM

Knots	60	90	120	150	180
Min:Sec	6:48	4:32	3:24	2:43	2:16

CIRCLING

740-1	631	(700-1)			
-------	-----	---------	--	--	--

3000

ISO R-270

LARNO R-270

29

6.8 NM

CATEGORY	A	B	C	D	E
	740-1	631 (700-1)	740-1¾ 631 (700-1¾)	740-2 631 (700-2)	740-2¼ 631 (700-2¼)

SE-2, 10 JUL 2025 to 07 AUG 2025

SE-2, 10 JUL 2025 to 07 AUG 2025