

RNAV (GPS) RWY 8

WAAS CH 63600 W08A	APCH CRS 081°	Rwy ldg TDZE 73 Arprt Elev 109
--------------------------	------------------	--------------------------------------

- (USAF)

SEYMOUR JOHNSON AFB (KGSB)

RNP APCH-GPS	ALSIF-1 	MISSED APPROACH: Climb to 2300 direct ZILOB and hold.
--------------	-------------	---

ATIS★ 317.625	APP CON 119.7 273.6 (111° -257°) 123.7 290.9 (258° -110°)	TOWER★ 126.25 370.875	GND CON 132.45 275.8	CLNC DEL 128.025 270.8
------------------	---	--------------------------	-------------------------	---------------------------

319

*** When ALS inop, increase CAT
AB RVR to 55, vis to 1 mile;
CAT CDE vis to 1 3/8 miles.

**** Circling NA N of RWY 8-26.

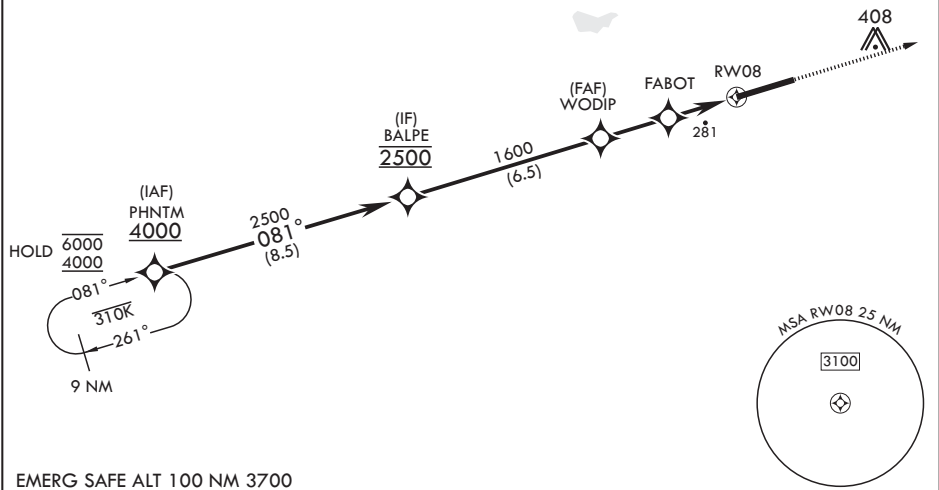
For uncompensated
Baro-VNAV systems,
procedure NA below -15°C
(5°F) or above 54°C (130°F).

MISSED APPROACH 9 NM

081°

261°

ZILOB



PHNTM 4000	BALPE 2500	WODIP 1600	FABOT 840	RWY 08 281	2300 ZILOB ELEV 109	TDZE 73
GP 3.00° TCH 55						
CATEGORY	A	B	C	D	E	
LPV DA*	273/24	200	(200-½)			
LNAV/VNAV DA**	540/50	467	(500-1)			
LNAV MDA***	540/24 467 (500-½)	540/50 467 (500-1)				
CIRCLING****	580-1 471 (500-1)	600-1 491 (500-1)	680-1½ 571 (600-1½)	740-2 631 (700-2)	740-2¼ 631 (700-2¼)	

RNAV (GPS) RWY 8