

GOLDSBORO, NORTH CAROLINA

TACAN GS
Chan 112

APCH CRS
081°

| | |
|-----------|--------|
| Rwy Idg | 11,760 |
| TDZE | 73 |
| Arpt Elev | 109 |

[USAF]

HI-TACAN Z RWY 8

SEYMOUR JOHNSON AFB (KGSB)

T * When ALS inop, increase vis to 1 3/8 miles.
 ** Circling N of Rwy 8-26 not authorized



MISSED APPROACH: Climb to 2300 via GSB TACAN R-081 to ZILOB and hold.

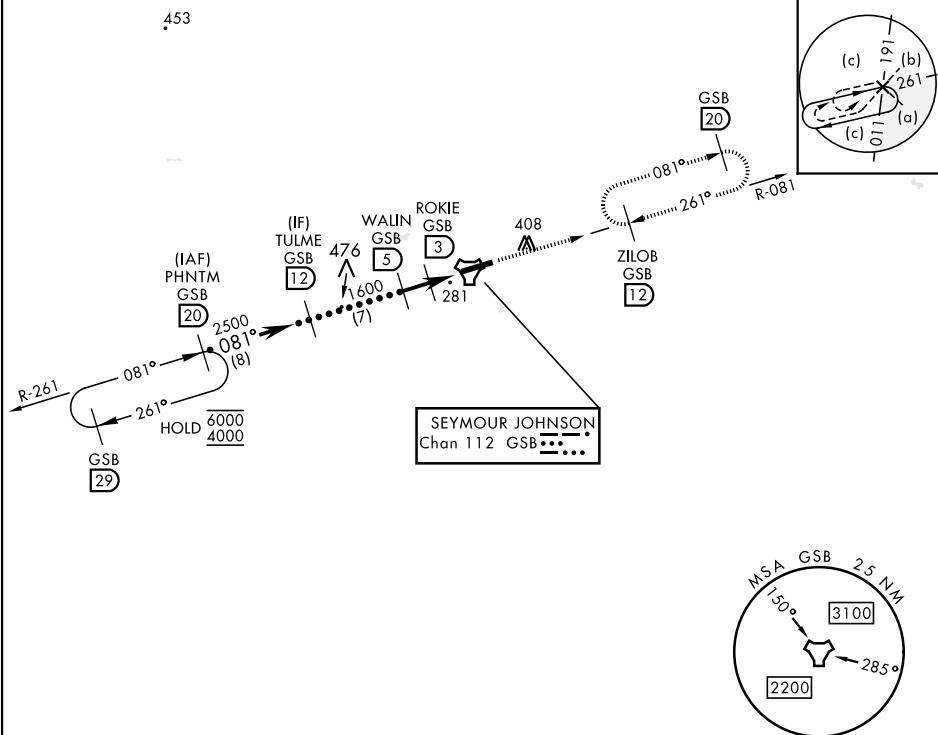
ATIS ★
317.625

| | | | |
|--------------|--------------|--------------|--|
| | APP | CON | |
| 123.7 | 290.9 | (258°- 110°) | |
| 119.7 | 273.6 | (111°- 257°) | |

TOWER ★
126.25 370.875

GND CON
132.45 275.8

CLNC DEL
128.025 270.8



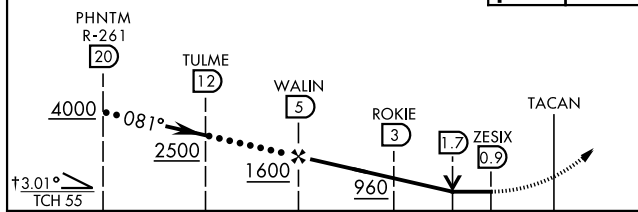
EMERG SAFE ALT 100 NM 3700

† WALIN to ZESIX

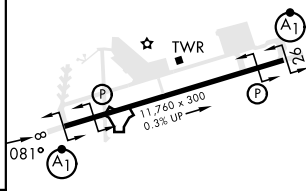
2300
GSB
R-081

ZILO
GSB
12

ELEV 10

 TDZE | 73 |

| | | | | | |
|---------------|------------------------|----------------------|------------------------|--------|--|
| | | 2 NM | 2.1 NM | 0.5 NM | |
| CATEGORY | C | D | E | | |
| S-8 * | 540/50 | 467 (500-1) | | | |
| C CIRCLING ** | 680-1½ 571 (600-1½) | 740-2 631 (700-2) | 740-2¼ 631 (700-2¼) | | |



HIRL Rwy 8-26

GOLDSBORO, NORTH CAROLINA

35°20'N-77°58'W

SEYMOUR JOHNSON AFB (KGSB)

Amdt 8 03NOV22

HI-TACAN Z RWY 8

SE-2, 10 JUL 2025 to 07 AUG 2025