



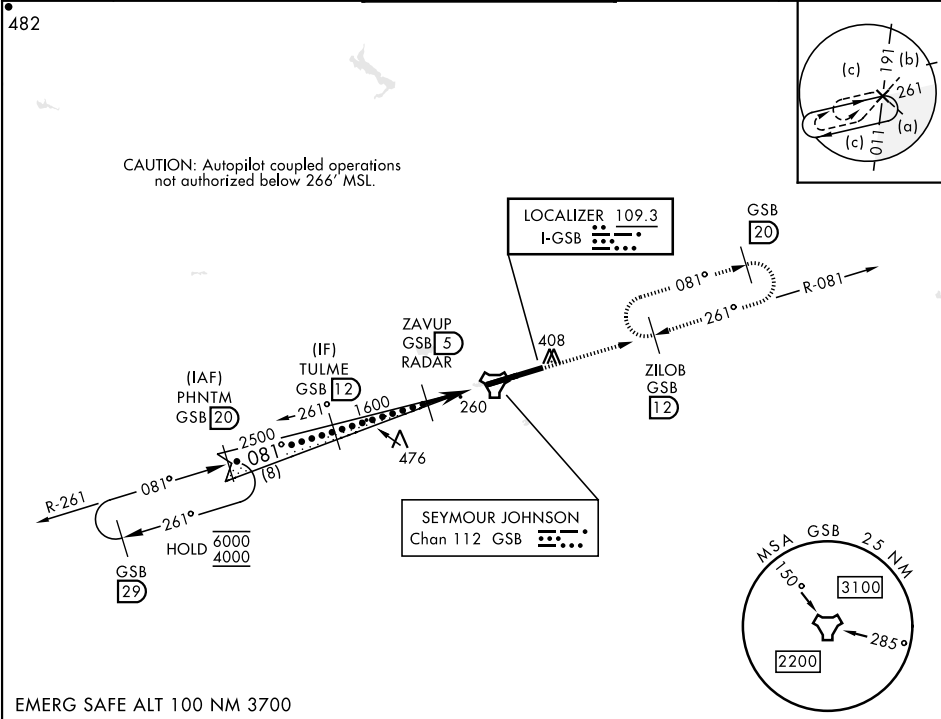
GOLDSBORO, NORTH CAROLINA

# HI-ILS or LOC Z RWY 8

LOC I- <b>GSB</b> <b>109.3</b>	APCH CRS <b>081°</b>	Rwy Idg <b>11,760</b> TDZE <b>73</b> Arpt Elev <b>109</b>	[USAF]	SEYMOUR JOHNSON AFB (KGSB)
-----------------------------------	-------------------------	---	--------	----------------------------

RADAR or DME required.	ALSF-1 	MISSED APPROACH: Climb to 2300 via GSB R-081 to ZILOB and hold.
▼ * When ALS inop, increase RVR to 40 and vis to ¾ mile. ** When ALS inop, increase vis to 1 ¾ miles. *** Circling N of Rwy 8-26 not authorized.		

ATIS ★ <b>317.625</b>	APP CON <b>123.7 290.9</b> (258°-110°) <b>119.7 273.6</b> (111°- 257°)	TOWER ★ <b>126.25 370.875</b>	GND CON <b>132.45 275.8</b>	CLNC DEL <b>128.025 270.8</b>
--------------------------	--	----------------------------------	--------------------------------	----------------------------------



EMERG SAFE ALT 100 NM 3700

VGSi and ILS glidepath not coincident (VGSi Angle 3.00/TCH 55).			2300 GSB R-081	ZILOB R-081 12	ELEV 109	TDZE 73
GS 3.00° TCH 47						
CATEGORY	C	D	E			
S-ILS 8*	273/24	200	(200-½)			
S-LOC 8**	520/45	447	(500-¾)			
CIRCLING ***	680-1½ 571 (600-1½)	740-2 631 (700-2)	740-2¼ 631 (700-2¼)			
HIRL Rwy 8-26				FAF to MAP 4.1 NM		
Knots				120	140	160 180 200
Min:Sec				2:03	1:45	1:32 1:22 1:14

GOLDSBORO, NORTH CAROLINA

35° 20' N-77° 58' W

SEYMOUR JOHNSON AFB (KGSB)

Amtd 8 17APR25

# HI-ILS or LOC Z RWY 8



SE-2, 10 JUL 2025 to 07 AUG 2025

SE-2, 10 JUL 2025 to 07 AUG 2025