
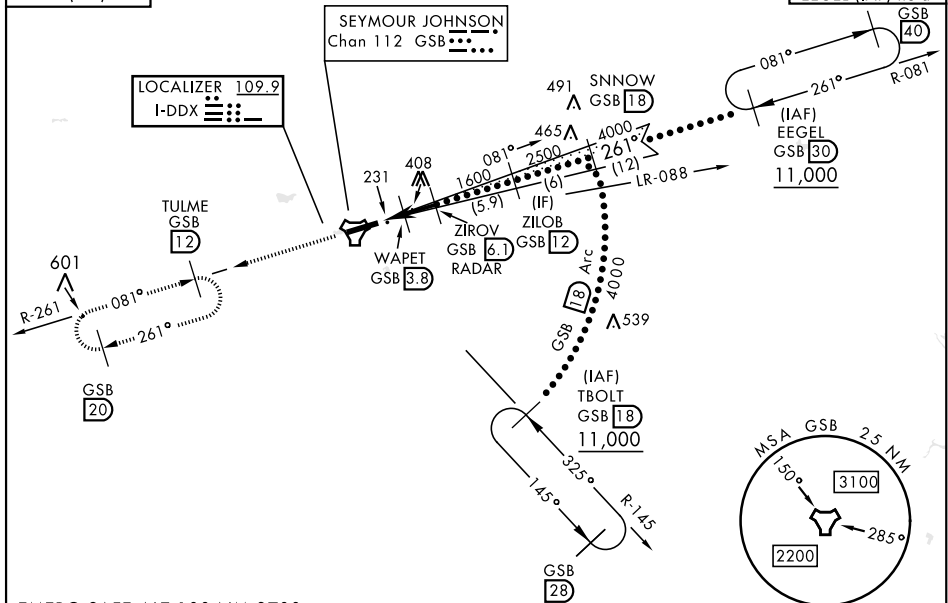
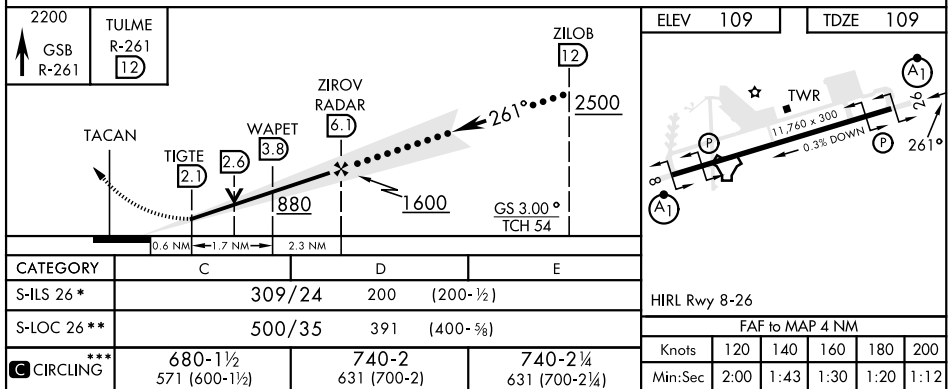


RADAR or DME required.		ALSF-1 	MISSED APPROACH: Climb to 2200 via GSB TACAN R-261 to TULME and hold.
▼ * When ALS inop, increase RVR to 40 and vis to $\frac{3}{4}$ mile. ** When ALS inop, increase RVR to 60 and vis to $1\frac{1}{2}$ miles.			

<p>Diagram of TBOLT (IAF) hold pattern. The diagram shows a circular area with a dashed oval labeled (c) and a dashed line labeled (a). A small circle labeled (b) is at the top. A dashed line labeled 033 is on the left. A dashed line labeled 215 is on the right.</p>	<p>397 *** Circling N of Rwy 8-26 not authorized.</p> <p>Autopilot coupled approach NA below 375' MSL.</p>	<p>Diagram of EEGEL (IAF) hold pattern. The diagram shows a circular area with a dashed oval labeled (c) and a dashed line labeled (a). A small circle labeled (b) is at the bottom. A dashed line labeled 081 is on the left. A dashed line labeled 191 is on the right.</p>
<p>TBOLT (IAF) hold</p>		<p>EEGEL (IAF) hold</p>



EMERG SAFE ALT 100 NM 3700



35°20'N-77°58'W

SEYMOUR JOHNSON AFB (KGSB)

Amdt 9 03NOV22

HI-ILS or LOC Z RWY 26