

APP CRS  
**041°**

Rwy Idg **4798**  
TDZE **16**  
Apt Elev **19**

**RNAV (GPS) RWY 4**  
ST SIMONS ISLAND (SSI)

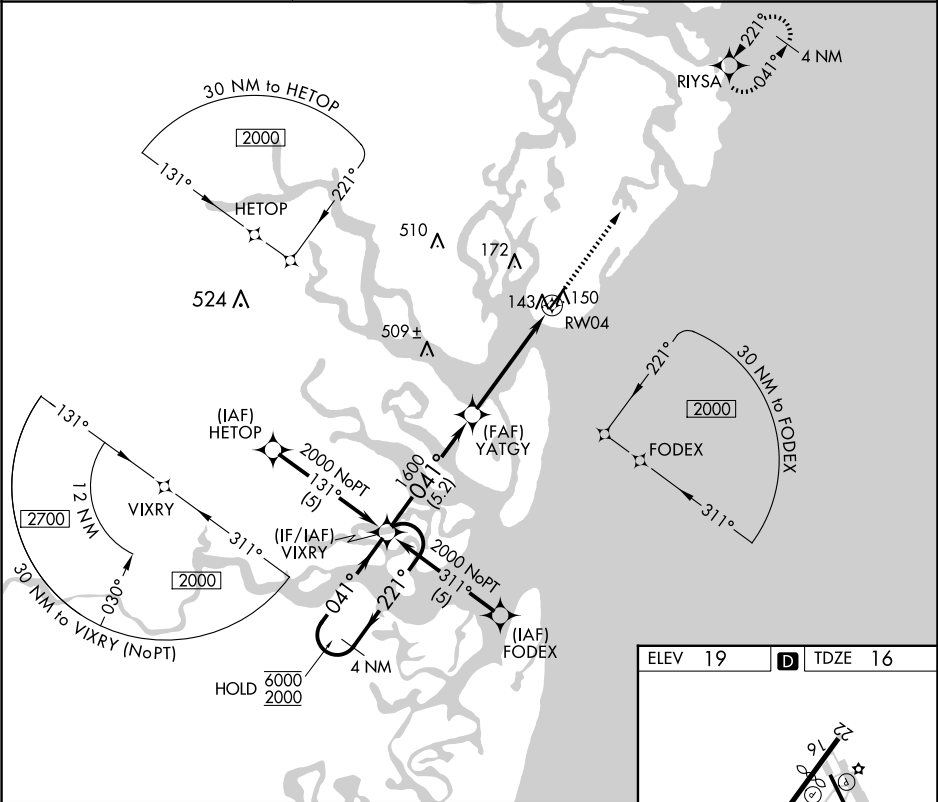
RNP APCH.  
▼ Rwy 4 helicopter visibility reduction below ¾ SM NA.  
Circling Rwy 16, 34 NA at night.

MISSED APPROACH: Climb to 2000 direct RIYSA and hold.

AWOS-3PT  
**120.025**

JACKSONVILLE CENTER  
**126.75 277.4**

UNICOM  
**123.05 (CTAF) 0**



4 NM Holding Pattern

VGSIs and descent angles not coincident (VGSIs Angle 4.00/TCH 37).

2000 RIYSA

The holding pattern for VIXRY is a 4 NM holding pattern with a 2000' MSL altitude. The heading is 041°. The pattern includes a 0.8 NM segment to RW04 and a 3.04° angle to the final approach.

CATEGORY	A	B	C	D
LNNAV MDA	420-1 404 (500-1)	420-1½ 404 (500-1½)		
CIRCLING	480-1 461 (500-1)	500-1½ 481 (500-1½)	580-2 561 (600-2)	

REIL Rwy 4 0

HIRL Rwy 4-22 and 16-34 0