

WAAS CH <b>56501</b> <b>W07A</b>	APP CRS <b>069°</b>	Rwy Idg TDZE Apt Elev	<b>8001</b> <b>26</b> <b>26</b>
--	------------------------	-----------------------------	---------------------------------------

RNAV (GPS) RWY 7  
BRUNSWICK GOLDEN ISLES (BQK)

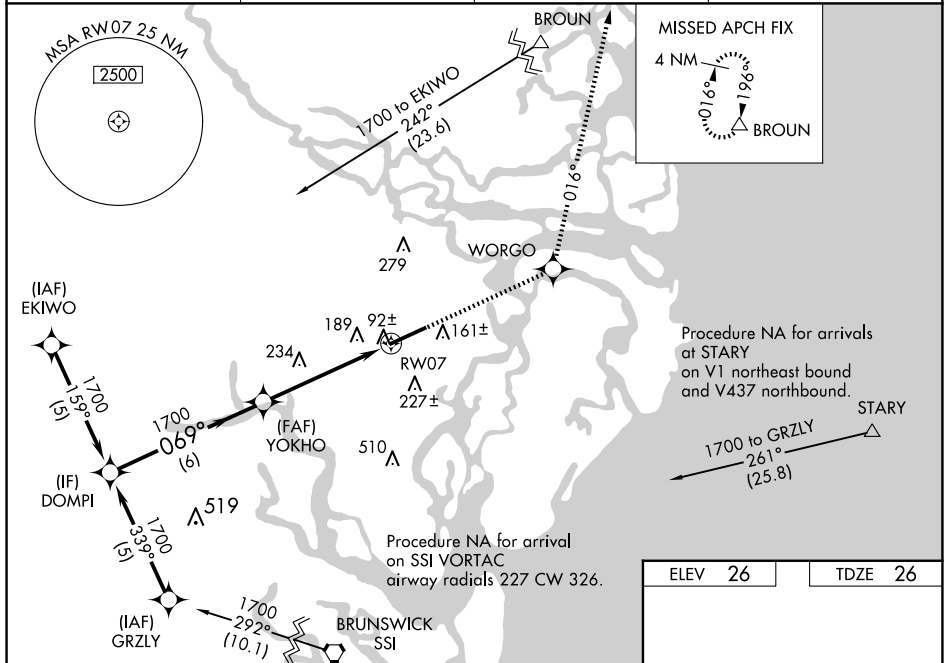
RNP APCH.

**⚠** For uncompensated Baro-VNAV systems, LNAV/VNAV NA below -15°C or above 48°C. VDP and Baro-VNAV NA when using St Simons Island altimeter setting. When local altimeter setting not received, use St Simons Island altimeter setting: increase LPV DA to 245 feet, LNAV/VNAV DA to 505 feet and LNAV/VNAV visibility  $\frac{1}{2}$  SM; increase all MDAs 20 feet. For inop ALS, increase LNAV Cat C/D visibility to  $\frac{1}{2}$  SM. For inop ALS when using St Simons Island altimeter setting, increase LNAV/VNAV all Cats and LNAV Cat C/D visibility to  $\frac{1}{2}$  SM.

MALSR  
A5

**MISSED APPROACH:**  
Climb to 3000 direct  
WORG0 and via track  
016° to BROWN and hold.

AWOS-3 <b>124.175</b>	JACKSONVILLE CENTER <b>126.75 277.4</b>	CLNC DEL <b>126.75 277.4</b>	UNICOM <b>123.0 (CTAF) 0</b>
--------------------------	--	---------------------------------	---------------------------------



Procedure Turn NA

DOMPL

YOKHO 1700

1700

069°

1700

069°

\*1.3 NM to RW07

\*LNAV only.

GP 3.00°  
TCH 58

6 NM

3.7 NM

1.3 NM

RW07

CATEGORY	A	B	C	D
LPV DA		226-1/2	200 (200-1/2)	
LNAV/ VNAV DA		486-7/8	460 (500-7/8)	
LNAV MDA	500-1/2	474 (500-1/2)	500-1	474 (500-1)
CIRCLING	540-1	514 (600-1)	560-1 1/2 534 (600-1 1/2)	800-2 1/2 774 (800-2 1/2)

