

WAAS CH <b>61201</b> <b>W25A</b>	APP CRS <b>249°</b>	Rwy Idg TDZE Apt Elev	<b>8001</b> <b>26</b> <b>26</b>
--	------------------------	-----------------------------	---------------------------------------

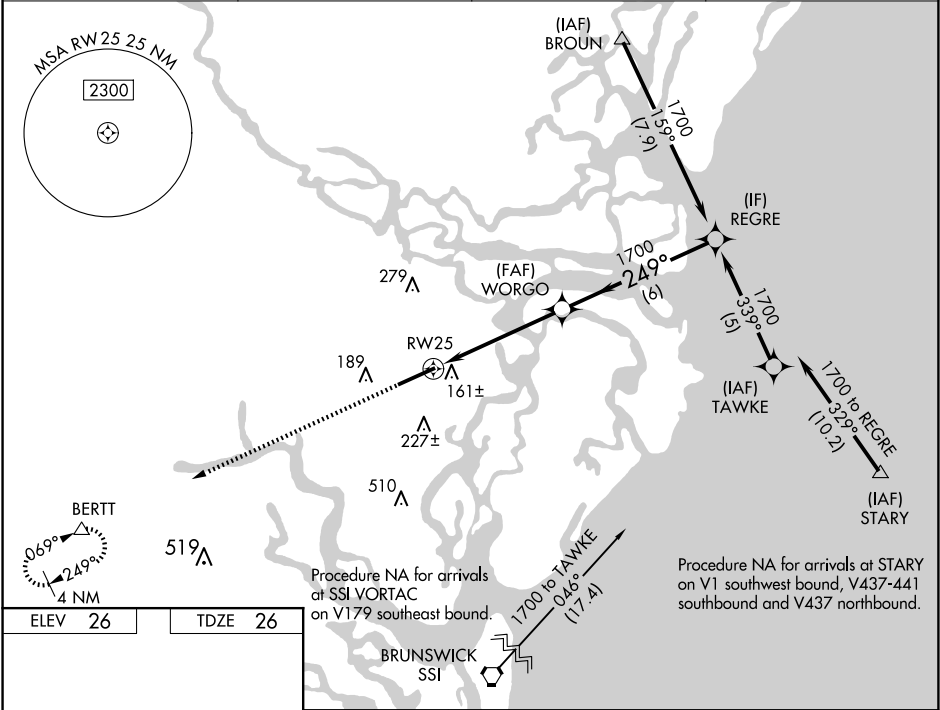
RNAV (GPS) RWY 25  
BRUNSWICK GOLDEN ISLES (BQK)

RNP APCH.

For uncompensated Baro-VNAV systems,  
LNAV/VNAV NA below -15°C or above 54°C.

MISSED APPROACH:  
Climb to 3000 direct BERTT and hold.

AWOS-3 <b>124.175</b>	JACKSONVILLE CENTER <b>126.75 277.4</b>	CLNC DEL <b>126.75 277.4</b>	UNICOM <b>123.0 (CTAF) 0</b>
--------------------------	--	---------------------------------	---------------------------------



ELEV 26

TDZE 26

3000

BERTT

VGSi and RNAV glidepath not coincident  
(VGSi angle 3.00/TCH 50).

249° to RW25

8001 x 150

REIL Rwy 25 0

HIRL Rwy 7-25 0

\*LNAV only.

RW25

249°

1700

Procedure Turn NA

GP 3.00°  
TCH 46

1.1 NM

4 NM

6 NM

CATEGORY	A	B	C	D
LPV DA	226-3/4 200 (200-3/4)			
LNAV/VNAV DA	396-1 370 (400-1)			
LNAV MDA	420-1	394 (400-1)	420-1 3/8 394 (400-1 1/8)	420-1 1/4 394 (400-1 1/4)
CIRCLING	540-1	514 (600-1)	560-1 1/2 534 (600-1 1/2)	800-2 1/2 774 (800-2 1/2)

SE-4, 10 JUL 2025 to 07 AUG 2025

SE-4, 10 JUL 2025 to 07 AUG 2025