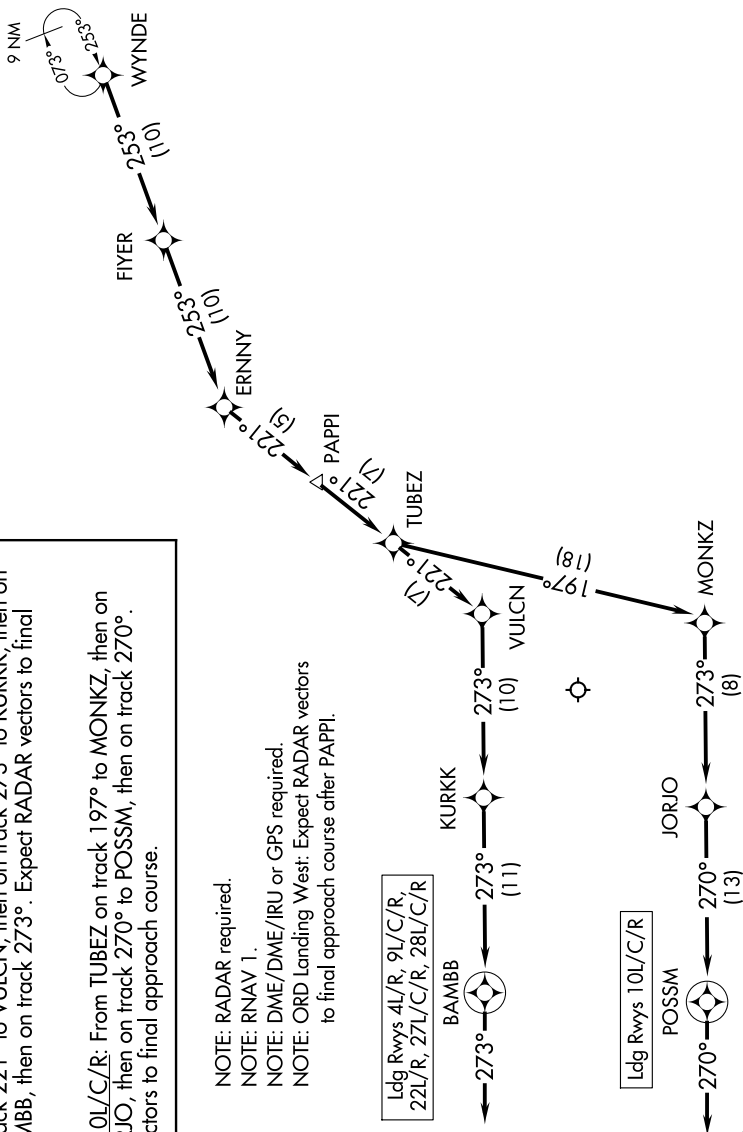


WYNDE TWO ARRIVAL (RNAV) Arrival Routes

CHICAGO APP CON
119.0 292.125
D-ATIS
135.4 282.225



ARRIVAL ROUTE DESCRIPTION

From WYNDE on track 253° to FIYER, then on track 253° to ERNINY, then on track 221° to PAPPI, then on track 221° to TUBEZ.

LANDING RWYS 4L/R, 9L/C/R, 22L/R, 27L/C/R, 28L/C/R:

From TUBEZ on track 221° to VULCN, then on track 273° to KURKK, then on track 273° to BAMBB, then on track 273°. Expect RADAR vectors to final approach course.

LANDING RWY 10L/C/R. From TUBEZ on track 197° to MONKZ, then on track 273° to JORJO, then on track 270° to POSSM, then on track 270°. Expect RADAR vectors to final approach course.

NOTE: RADAR required.

NOTE: RNAV 1.

NOTE: DME/DME/IRU or GPS required.

NOTE: ORD Landing West: Expect RADAR vectors to final approach course after PAPPI.

Ldg Rwys 4L/R, 9L/C/R,
22L/R, 27L/C/R, 28L/C/R

Ldg Rwys 10L/C/R

NOTE: Chart not to scale.