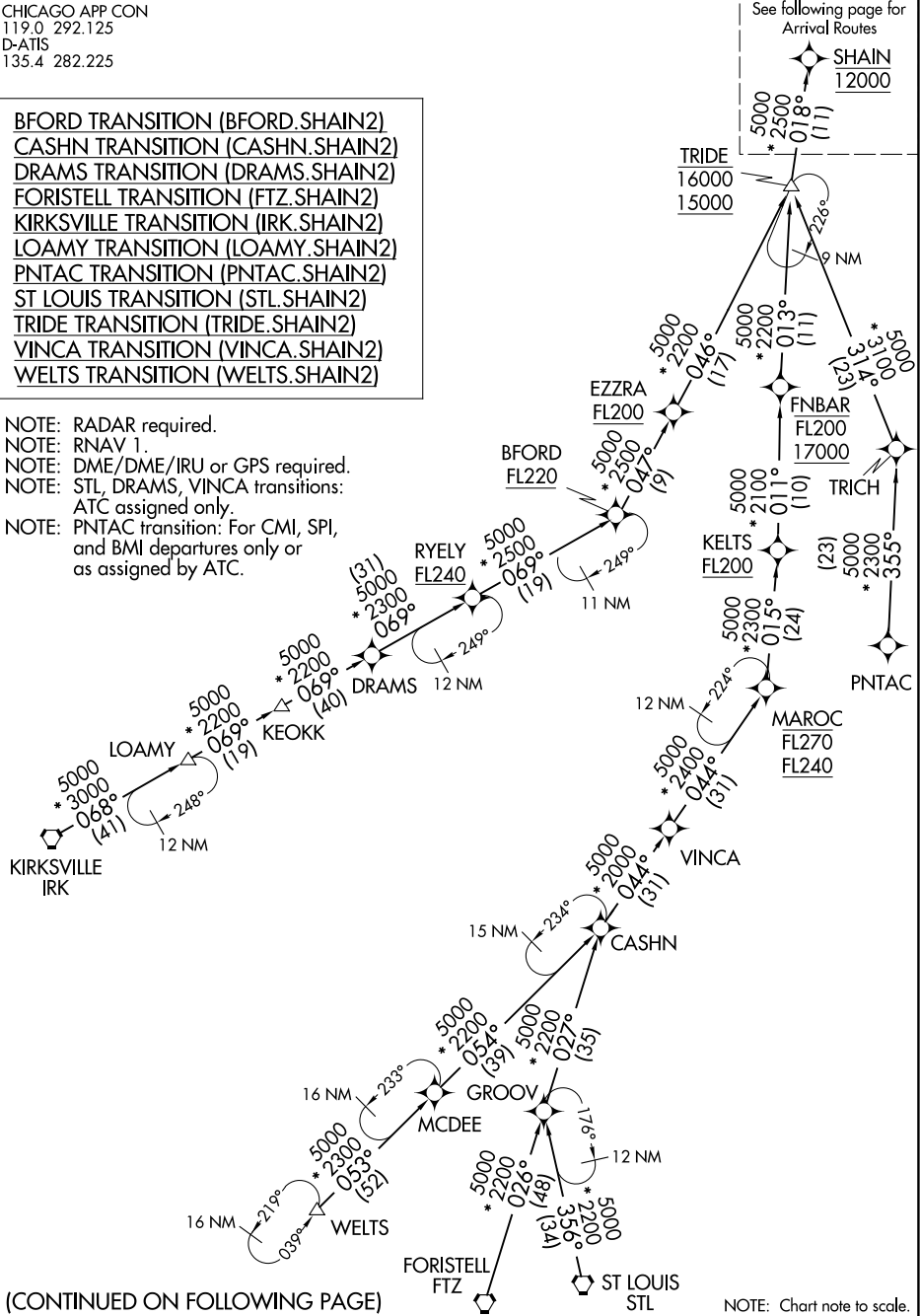


CHICAGO APP CON  
119.0 292.125  
D-ATIS  
135.4 282.225

- BFord TRANSITION (BFORD.SHAIN2)  
CASHN TRANSITION (CASHN.SHAIN2)  
DRAMS TRANSITION (DRAMS.SHAIN2)  
FORISTELL TRANSITION (FTZ.SHAIN2)  
KIRKSVILLE TRANSITION (IRK.SHAIN2)  
LOAMY TRANSITION (LOAMY.SHAIN2)  
PNTAC TRANSITION (PNTAC.SHAIN2)  
ST LOUIS TRANSITION (STL.SHAIN2)  
TRIDE TRANSITION (TRIDE.SHAIN2)  
VINCA TRANSITION (VINCA.SHAIN2)  
WELTS TRANSITION (WELTS.SHAIN2)

NOTE: RADAR required.  
NOTE: RNAV 1.  
NOTE: DME/DME/IRU or GPS required.  
NOTE: STL, DRAMS, VINCA transitions:  
ATC assigned only.  
NOTE: PNTAC transition: For CMI, SPI,  
and BMI departures only or  
as assigned by ATC.



(CONTINUED ON FOLLOWING PAGE)

NOTE: Chart note to scale.