

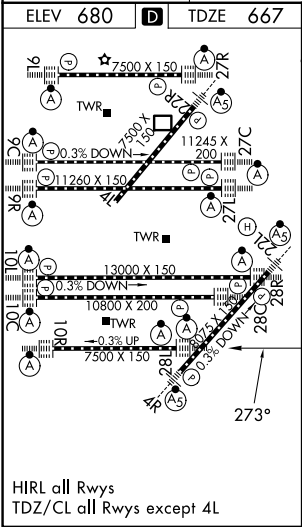
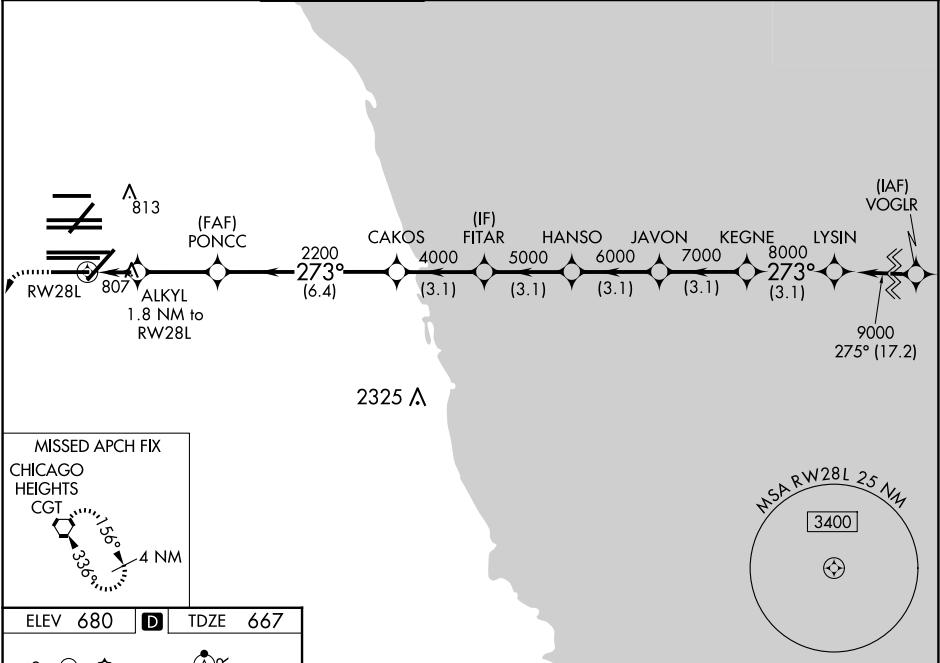
WAAS CH <b>65837</b> <b>W28D</b>	APP CRS <b>273°</b>	Rwy Ldg TDZE Apt Elev	<b>7500</b> <b>667</b> <b>680</b>
--	------------------------	-----------------------------	---

RNAV (GPS) Z RWY 28L

CHICAGO O'HARE INTL (ORD)

RNP APCH.	ALSF-2	MISSED APPROACH: Climb 1200 then climbing left turn to 4000 direct CGT VORTAC and hold.
Simultaneous approach authorized. LNAV procedure NA during simultaneous operations. For uncompensated Baro-VNAV systems, LNAV/VNAV NA below -19C or above 54C. Use of FD or AP required during simultaneous operations.		

D-ATIS <b>135.4</b> <b>282.225</b>	CHICAGO APP CON <b>119.0 292.125</b>	O'HARE TOWER <b>133.0 348.0</b>	GND CON <b>124.125</b> (TWR NORTH) <b>118.05</b> (TWR SOUTH) <b>226.675</b> (ALL TWRs)	(TWR CENTER) <b>121.75</b> (OBND) <b>121.9</b> (IBND)	CLNC DEL <b>121.6</b>	CPDLC
--	--	------------------------------------	---	---	--------------------------	-------



1200	4000	CGT	
*LNAV only.			
ALKYL 1.8 NM to RWY 28L	*1.1 NM to RWY 28L	PONCC	2200
RWY 28L	*1280	2200	
1.1 NM	0.7	2.9 NM	6.4 NM
CAKOS	FITAR	HANSO	JAVON
4000	5000	6000	7000
KEGNE	LYSIN		9000
3.1 NM	3.1 NM	3.1 NM	3.1 NM
GP 3.00°	TCH 55		
CATEGORY	A	B	C
LPV	DA	867/18	200 (200-1/2)
LNAV/ VNAV	DA	1090/40	423 (500-3/4)
LNAV	MDA	1060/24	393 (400-1/2)
			1060/35 393 (400-5/8)