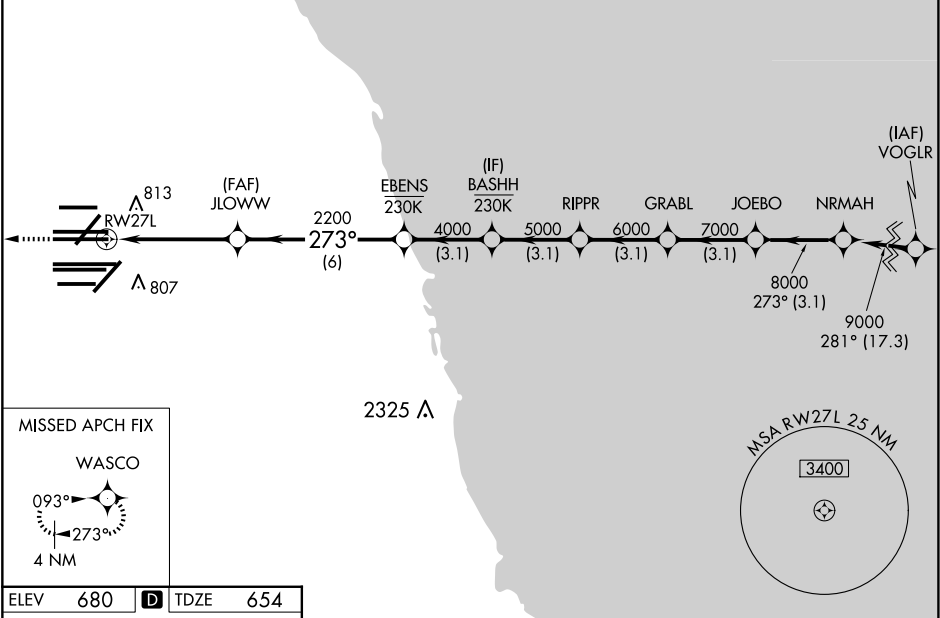


| | | |
|--|------------------------|--|
| WAAS CH 77804 W27A | APP CRS 273° | Rwy Ldg 11260 TDZE 654 Apt Elev 680 |
|--|------------------------|--|

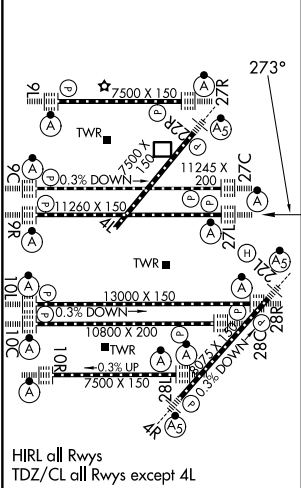
RNAV (GPS) Z RWY 27L

CHICAGO O'HARE INTL (ORD)

| | | | | | | | |
|--|--|------------------------------------|---|---|--------------------------|---|--|
| RNP APCH - GPS. | | | | ALSIF-2 | | MISSED APPROACH: Climb to 4000 direct WASCO and hold. | |
| Simultaneous approach authorized. INAV procedure NA during simultaneous operations. Use of FD or AP required during simultaneous operations. For uncompensated Baro-VNAV systems, INAV/VNAV NA below -19°C or above 54°C. | | | | | | | |
| D-ATIS 135.4 282.225 | CHICAGO APP CON 119.0 292.125 | O'HARE TOWER 126.9 348.0 | GND CON 124.125 (TWR NORTH) 118.05 (TWR SOUTH) 226.675 (ALL TWRs) | (TWR CENTER) 121.75 (OBND) 121.9 (IBND) | CLNC DEL 121.6 | CPDLC | |



| | | |
|----------|----------|----------|
| ELEV 680 | D | TDZE 654 |
|----------|----------|----------|



| | | | | | |
|-----------------|--|---|--|---------------|--|
| 4000 WASCO | | VGSI and RNAV glidepath not coincident (VGSI Angle 3.00/TCH 77). | | NRMAH | |
| | | | | | |
| 1.2 NM to RW27L | | 2200 | | 9000 | |
| 2200 | | 4000 | | 8000 | |
| JLOWW | | EBENS | | GRABL | |
| 2200 | | 5000 | | 7000 | |
| BASHH | | RIPPR | | JOEBO | |
| 2200 | | 6000 | | 8000 | |
| 1.2 NM to RW27L | | 2200 | | 9000 | |
| 1.2 | | 3.5 NM | | 6 NM | |
| CATEGORY A | | B | | C | |
| LPV DA | | 854/18 | | 200 (200-1/2) | |
| LNAV/VNAV DA | | 1088/40 | | 434 (500-3/4) | |
| LNAV MDA | | 1100/24 | | 1100/45 | |
| | | 446 (500-1/2) | | 446 (500-7/8) | |