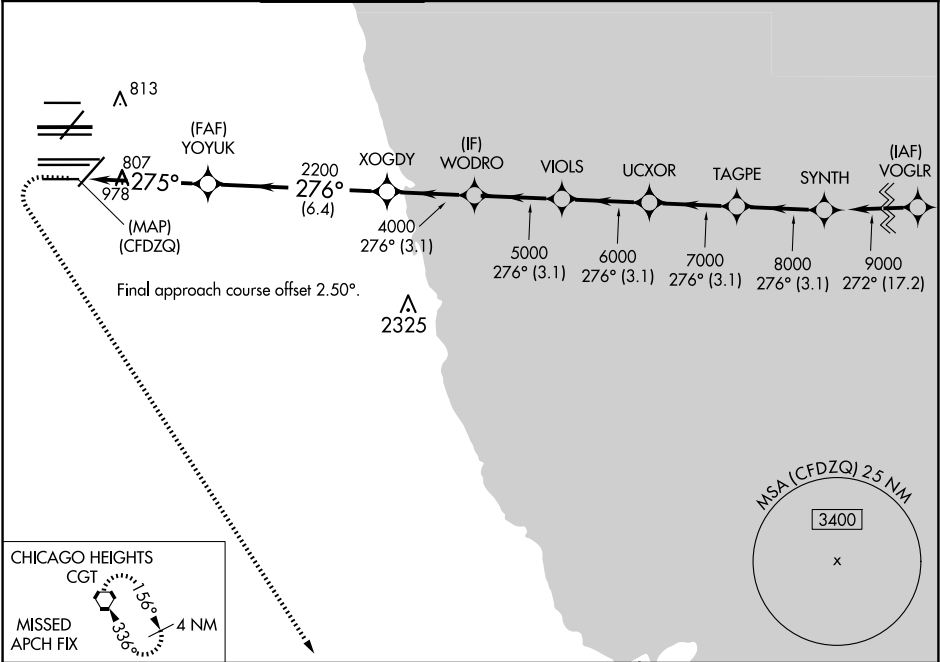


WAAS CH <b>93839</b> <b>W28E</b>	APP CRS <b>275°</b>	Rwy Ldg TDZE <b>667</b> Apt Elev <b>680</b>
--	------------------------	---

RNAV (GPS) Y RWY 28L

CHICAGO O'HARE INTL (ORD)

RNP APCH		ALSF-2		MISSED APPROACH: Climb to 1200 then climbing left turn to 4000 direct CGT VORTAC and hold.	
Simultaneous approach authorized. LNAV procedure NA during simultaneous operations. For uncompensated Baro-VNAV systems, LNAV/VNAV NA below -19°C or above 54°C. Use of FD or AP required during simultaneous operations.					
D-ATIS <b>135.4</b> <b>282.225</b>	CHICAGO APP CON <b>119.0 292.125</b>	O'HARE TOWER <b>133.0 348.0</b>	GND CON <b>124.125</b> (TWR NORTH) <b>118.05</b> (TWR SOUTH) <b>226.675</b> (ALL TWRs)	(TWR CENTER) <b>121.75</b> (OBND) <b>121.9</b> (IBND)	CLNC DEL <b>121.6</b>  CPDLC



1200 4000 CGT		SYNTH		ELEV 680	TDZE 667
* LNAV only		* 1.1 NM to (CFDZQ)		GP 3.00° TCH 55	
CATEGORY	A	B	C	D	HIRL all Rwys TDZ/CL all Rwys except 4L
LPV DA	917/24		250 (300-½)		
LNAV/VNAV DA	1090/40		423 (500-¾)		
LNAV MDA	1060/24	393 (400-½)	1060/35	393 (400-⅝)	

EC-3, 10 JUL 2025 to 07 AUG 2025

EC-3, 10 JUL 2025 to 07 AUG 2025