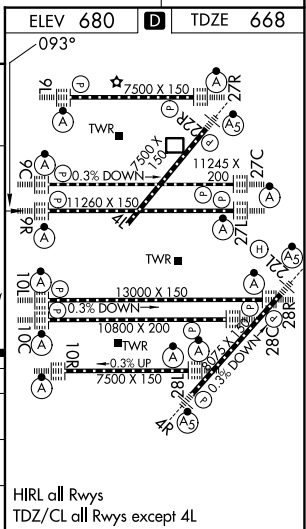
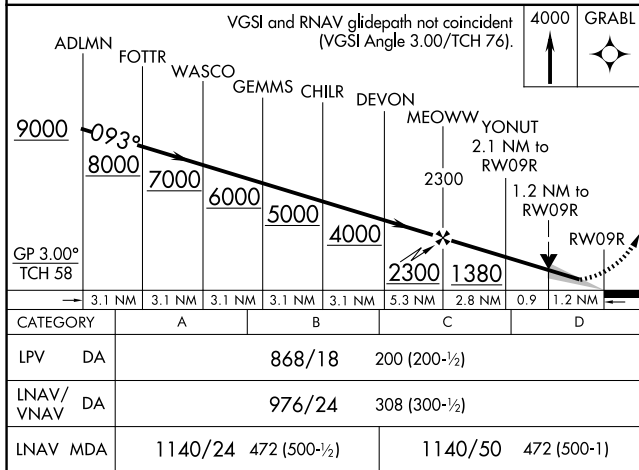
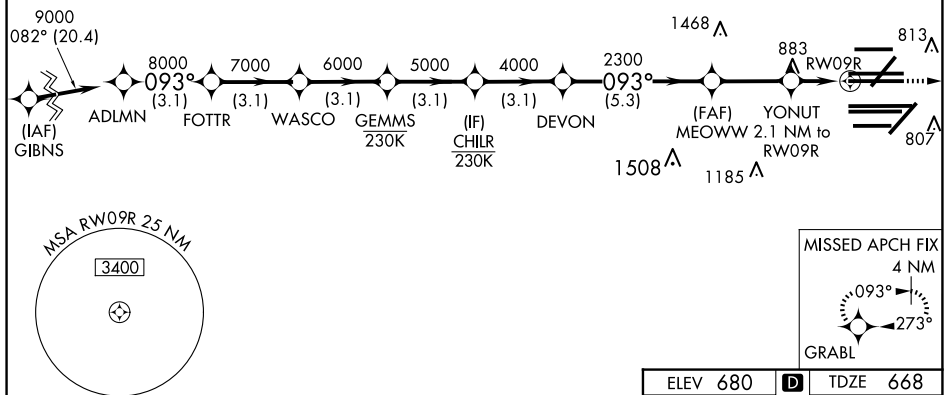


RNAV (GPS) RWY 9R  
CHICAGO O'HARE INTL (ORD)

Simultaneous approach authorized. LNAV procedure NA during simultaneous operations. Use of FD or AP required during simultaneous operations. For uncompensated Baro-VNAV systems, LNAV/VNAV NA below -19°C or above 54°C. For inop ALS, increase LNAV/VNAV all Cats visibility to RVR 4500. For inop ALS, increase LNAV Cats C/D visibility to 1 3/8 SM.

**MISSED APPROACH:**  
Climb to 4000 direct  
GRABL and hold.

D-ATIS 135.4 282.225	CHICAGO APP CON 119.0 292.125	O'HARE TOWER 126.9 348.0	GND CON (TWR NORTH) 124.125 (TWR SOUTH) 118.05 (ALL TWRs) 226.675	(TWR CENTER) 121.75 (OBND) 121.9 (IBND)	CLNC DEL 121.6	CPDLC
----------------------------	-------------------------------------	-----------------------------	---	---	-------------------	-------



EC-3, 10 JUL 2025 to 07 AUG 2025

EC-3, 10 JUL 2025 to 07 AUG 2025