

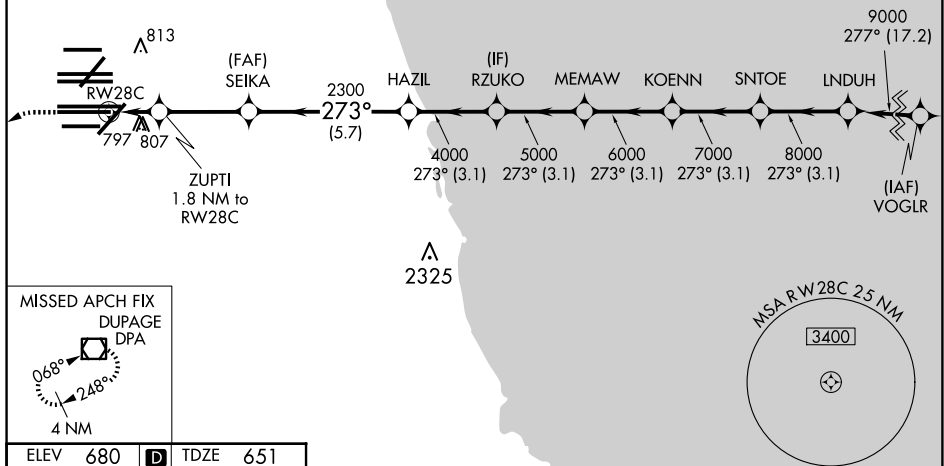
RNAV (GPS) RWY 28C  
CHICAGO O'HARE INTL (ORD)

ALSF-2

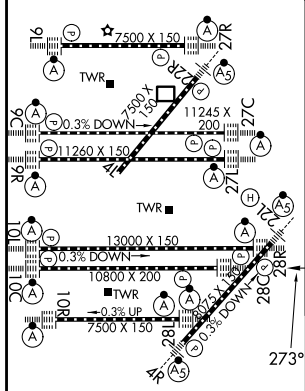
**MISSED APPROACH:**  
Climb to 1100 then  
climbing left turn to  
4000 direct DPA  
VOR/DME and hold.

D-ATIS 135.4 282.225	CHICAGO APP CON 119.0 292.125	O'HARE TOWER 120.75 348.0	GND CON 124.125 (TWR NORTH) 118.05 (TWR SOUTH) 226.675 (ALL TWRs)	(TWR CENTER) 121.75 (OBND) 121.9 (IBND)	CLNC DEL 121.6	CPDLC
----------------------------	-------------------------------------	------------------------------	--	---	-------------------	-------

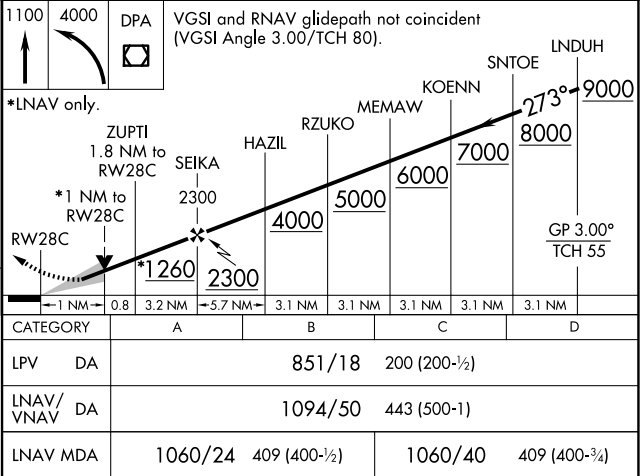
## RADAR REQUIRED



ELEV	680	<b>D</b>	TDZE	651
------	-----	----------	------	-----



HIRL all Rwys  
TDZ/CL all Rwys except 4L



EC-3, 10 JUL 2025 to 07 AUG 2025

EC-3. 10 JUL 2025 to 07 AUG 2025