

WAAS
CH **90504**
W22A

APP CRS
223°

Rwy Ldg
TDZE **652**
Apt Elev **680**

RNAV (GPS) RWY 22R

CHICAGO O'HARE INTL (ORD)

▼

▲

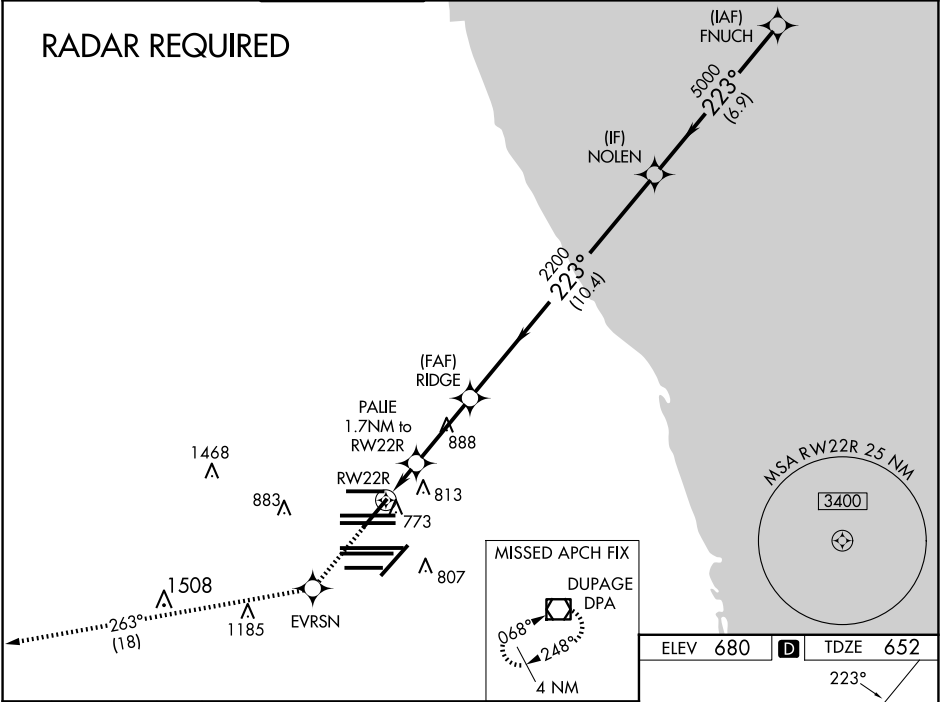
For uncompensated Baro-VNAV systems, LNAV/VNAV NA below -22°C (-7°F) or above 39°C (102°F). Simultaneous approach authorized with Rwy 22L. DME/DME RNP-0.3 NA. LNAV procedure NA during simultaneous operations. Use of FD or AP providing RNAV track guidance required during simultaneous operations.

MALSR

A5

MISSED APPROACH: Climb to 4000 direct EVRSN and on track 263° to DPA VOR/DME and hold.

D-ATIS 135.4 282.225	CHICAGO APP CON 119.0 292.125	O'HARE TOWER 126.9 348.0	<div>GND CON</div> <div><div>124.125 (TWR NORTH)</div><div>118.05 (TWR SOUTH)</div><div>226.675 (ALL TWRs)</div></div>	<div>(TWR CENTER)</div> <div><div>121.75 (OBND)</div><div>121.9 (IBND)</div></div>	CLNC DEL 121.6	CPDLC
--	--	------------------------------------	--	--	--------------------------	-------



4000 EVRSN

tr 263°

DPA

VGSI and RNAV glidepath not coincident (VGSI Angle 3.00/TCH 69).

* LNAV only.

PALIE 1.7 NM to RW22R

* 1 NM to RW22R

RIDGE

NOLEN

FNUCH

2200

5000

7000

GP 3.00° TCH 49

CATEGORY	A	B	C	D
LPV DA		852/18	200 (200-½)	
LNAV/ VNAV DA		972/32	320 (300-¾)	
LNAV MDA	1040/24	388 (400-½)	1040/35	388 (400-¾)
CIRCLING	1220-1	540 (600-1)	1220-1½ 540 (600-1½)	1460-2½ 780 (800-2½)

HIRL all Rwys

TDZ/CL all Rwys except 4L