

WAAS CH 50228 W22B	APP CRS 225°	Rwy Ldg 8075 TDZE 654 Apt Elev 680
--	------------------------	---

RNAV (GPS) RWY 22L

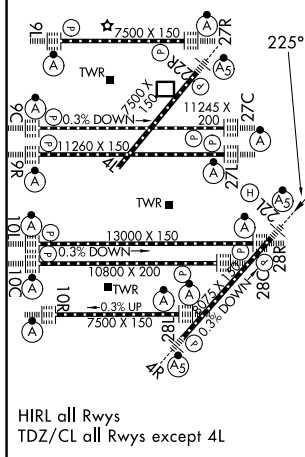
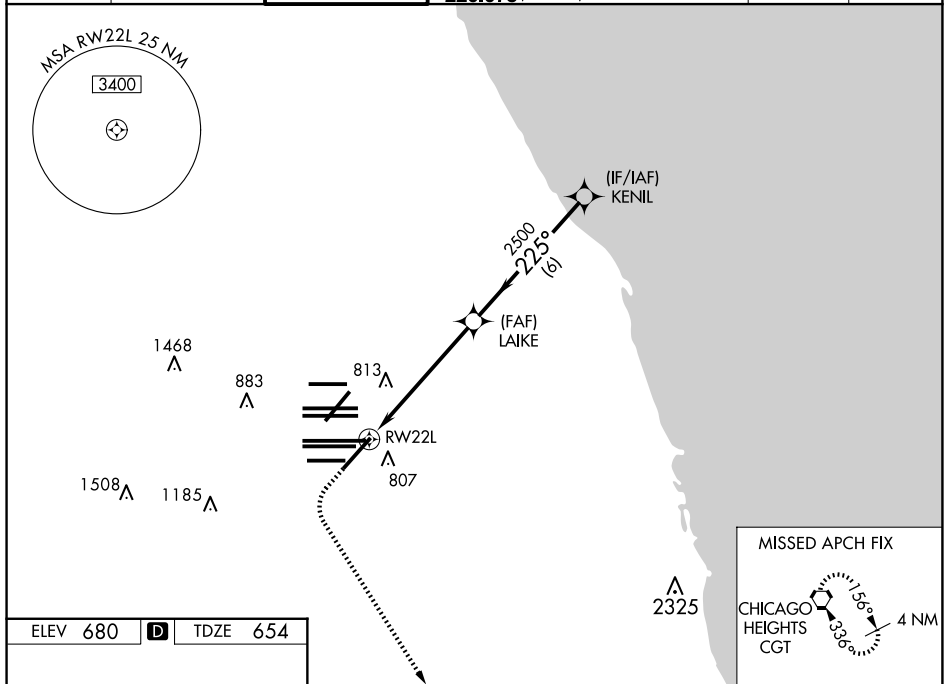
CHICAGO O'HARE INTL (ORD)

T For uncompensated Baro-VNAV systems, LNAV/VNAV NA below -19°C (-2°F) or above 54°C (130°F). Simultaneous approach authorized with Rwy 22R. DME/DME RNP-0.3 NA. LNAV procedure NA during simultaneous operations. Use of FD or AP providing RNAV track guidance required during simultaneous operations.

MALSR

MISSED APPROACH: Climb to 1100 then climbing left turn to 4000 direct CGT VORTAC and hold.

D-ATIS 135.4 282.225	CHICAGO APP CON 119.0 292.125	O'HARE TOWER 120.75 348.0	GND CON 124.125 (TWR NORTH) 118.05 (TWR SOUTH) 226.675 (ALL TWRs)	(TWR CENTER) 121.75 (OBND) 121.9 (IBND)	CLINC DEL 121.6	CPDLC
----------------------------	-------------------------------------	------------------------------	--	---	--------------------	-------



VGS1 and RNAV glidepath not coincident (VGS1 Angle 3.00°/TCH 73).

* LNAV only.

RW22L

LAKE

2500

225°

4000

GP 3.00° TCH 55

1.2

4.4 NM

6 NM

CATEGORY	A	B	C	D
LPV DA	854/18		200 (200-½)	
LNAV/VNAV DA	1066/45		412 (400-¾)	
LNAV MDA	1120/24 466 (500-½)		1120/50 466 (500-1)	
C CIRCLING	1220-1 540 (600-1)		1220-1½ 540 (600-1½)	1460-2½ 780 (800-2½)