

WAAS CH 48904 W10A	APP CRS 093°	Rwy Ldg 12246 TDZE 672 Apt Elev 680
--	------------------------	--

RNAV (GPS) RWY 10L

CHICAGO O'HARE INTL (ORD)

RADAR required for procedure entry: RNP APCH.

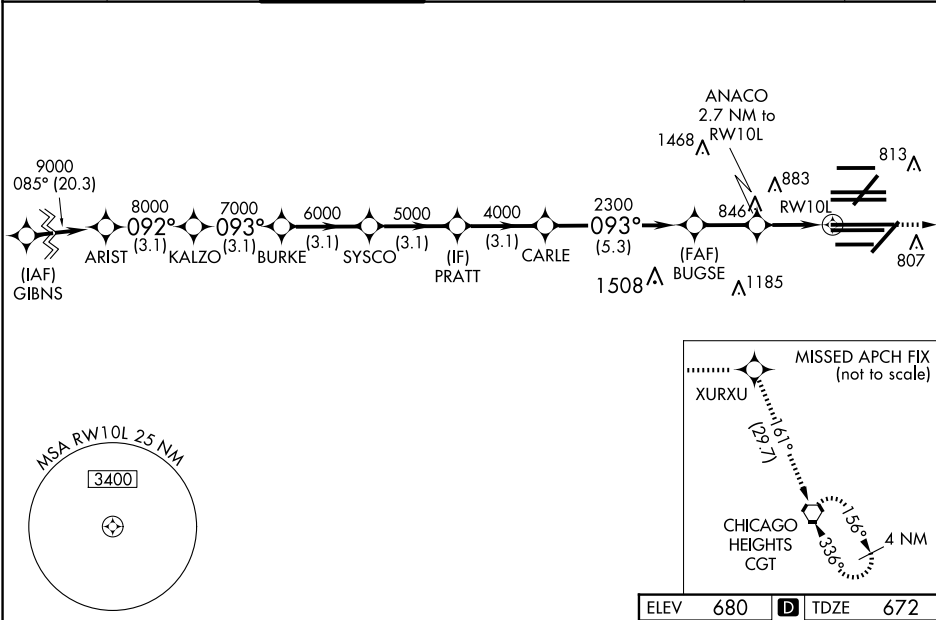
▼

For uncompensated Baro-VNAV systems, LNAV/VNAV NA below -19°C or above 54°C. Simultaneous approach authorized. LNAV procedure NA during simultaneous operations. Use of FD or AP providing RNAV track guidance required during simultaneous operations.

ALSIF-2

MISSED APPROACH: Climb to 4000 direct XURXU and on track 161° to CGT VORTAC and hold.

D-ATIS 135.4 282.225	CHICAGO APP CON 119.0 292.125	O'HARE TOWER 132.7 348.0	124.125 GND CON (TWR NORTH) 118.05 (TWR SOUTH) 226.675 (ALL TWRs)	121.75 (TWR CENTER) (OBND) 121.9 (IBND)	CLNC DEL 121.6	CPDLC
--	--	------------------------------------	--	--	--------------------------	-------



VGSi and RNAV glidepath not coincident (VGSi Angle 3.00/TCH 74).				4000 ↑	XURXU ✦	tr 161°	CGT ◡
ARIST KALZO BURKE SYSCO PRATT CARLE BUGSE ANACO 2.7 NM to RW10L				* LNAV only.			
9000 8000 7000 6000 5000 4000 2300 2300 1580							
GP 3.00° TCH 56							
→ 3.1 NM 3.1 NM 3.1 NM 3.1 NM 3.1 NM 5.3 NM -2.2 NM -1.5 1.2 ←							
CATEGORY	A		B		C		D
LPV DA	872/18		200 (200-½)				
LNAV/ VNAV DA	1062/35		390 (400-¾)				
LNAV MDA	1120/24	448 (500-½)		1120/45		448 (500-¾)	

7500 X 150

7500 X 150

11245 X 200

11260 X 150

13000 X 150

10800 X 200

7500 X 150

27C

27R

27L

27R

27L

27R

27L

28C

28R

28L

28R

28L

28R

28L

HIRL all Rwy's

TDZ/CL all Rwy's except 4L