

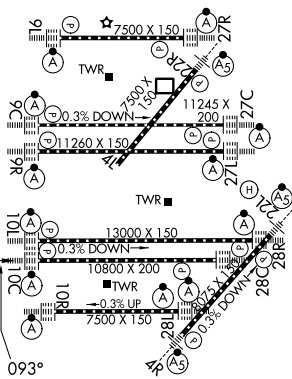
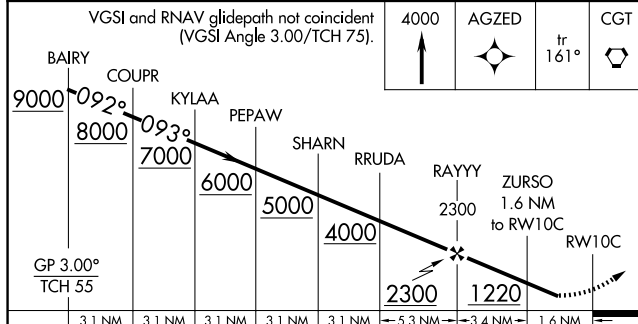
RNAV (GPS) RWY 10C
CHICAGO O'HARE INTL (ORD)

ALSF-2

MISSED APPROACH:
Climb to 4000 direct AGZED
and on track 161° to
CGT VORTAC and hold.

TWR CENTER
21.75 (OBN)
21.9 (IBND)

| | | |
|----------|----------|----------|
| ELEV 680 | D | TDZE 669 |
|----------|----------|----------|



HIRL all Rwy's
TDZ/CL all Rwy's except 4L